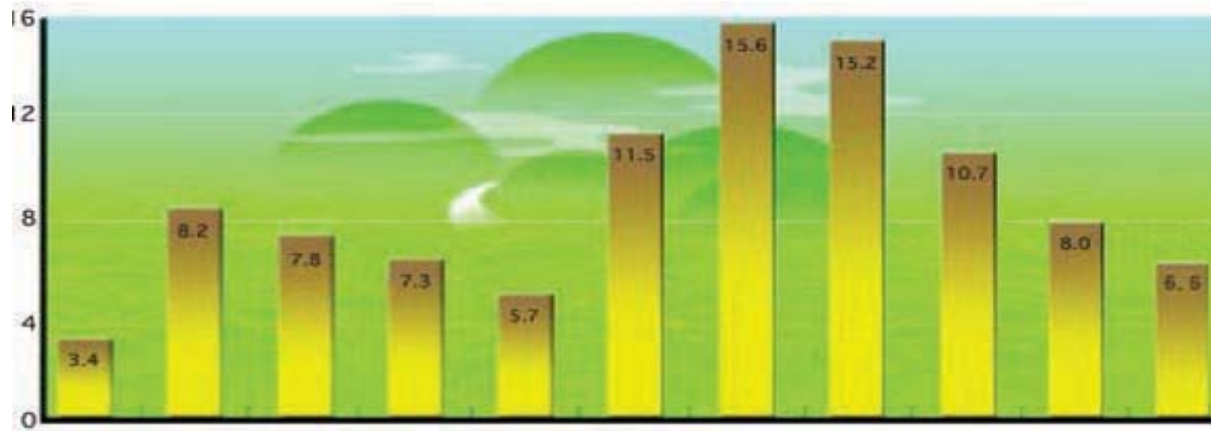


# SECTION A



State Ranking  
School Districts  
Superintendent Information

**NEW MEXICO'S RANKING AMONG THE STATES**  
(Selected Categories)

CATEGORY	RANKING	NEW MEXICO	U.S. AVERAGE
Students Enrolled per Teacher in Public Elementary and Secondary Schools, Fall 2004	24	15.0	15.8
Average Salaries of Public School Teachers, 2004-05	40	\$39,391	\$47,674
Percent of Revenue for Public Elementary and Secondary Schools (2004-05) <sup>2</sup> from:			
Local Government	49	13.3%	43.4%
State Government	3	70.1%	47.6%
Federal Government	2	16.6%	9.0%
Per Capita Total General Expenditures of State Governments for all Functions, 2002-03	7	\$5,170	\$4,003
Current Expenditures per Student in Public Elementary and Secondary Schools, Fall (2004-05) <sup>3</sup> Enrollment	26	\$8,178	\$8,661
Public School Revenue per Student in Fall Enrollment, 2004-05	28	9,287	\$9,870
Per Capita Personal Income, 2003	48	\$24,903	\$31,487

Source: *National Education Association Research's report, Rankings & Estimates: Rankings of the States 2005 and Estimates of School Statistics 2006*

<sup>1</sup>This is an average salary for all teachers paid out of the Operational Subfund and from federal funds.

<sup>2</sup>Included here are "receipts" for all public school funds (Operational, Teacherage, Transportation, Food Services, Athletics, Non-Instructional Support, Special Grant Projects, Capital Projects, and Debt Service) and the appropriation for the State Department of Education. "Receipts" excludes non-revenue items such as sale of bonds and property, loans, proceeds from insurance adjustments, abatements, and deferred sick leave accumulation.

<sup>3</sup>The following are included as "current expenditures": Expenditures for administration by the State Board of Education and the State Department of Education, instructional support, student support, operations and maintenance, student transportation, and food services. Excluded are interest on school debt, capital outlay, summer school, and community services.

NEW MEXICO'S 89 SCHOOL DISTRICTS

BY DISTRICT			
DISTRICT	COUNTY	DISTRICT	COUNTY
ALAMOGORDO	Otero	LAS CRUCES	Dona Ana
ALBUQUERQUE	Bernalillo	LAS VEGAS CITY	San Miguel
ANIMAS	Hidalgo	LAS VEGAS WEST	San Miguel
ARTESIA	Eddy	LOGAN	Quay
AZTEC	San Juan	LORDSBURG	Hidalgo
BELEN	Valencia	LOS ALAMOS	Los Alamos
BERNALILLO	Sandoval	LOS LUNAS	Valencia
BLOOMFIELD	San Juan	LOVING	Eddy
CAPITAN	Lincoln	LOVINGTON	Lea
CARLSBAD	Eddy	MAGDALENA	Socorro
CARRIZOZO	Lincoln	MAXWELL	Colfax
CENTRAL	San Juan	MELROSE	Curry
CHAMA	Rio Arriba	MESA VISTA	Taos
CIMARRON	Colfax	MORA	Mora
CLAYTON	Union	MORIARTY	Torrance
CLOUDCROFT	Otero	MOSQUERO	Harding
CLOVIS	Curry	MOUNTAINAIR	Torrance
COBRE	Grant	PECOS	San Miguel
CORONA	Lincoln	PENASCO	Taos
CUBA	Sandoval	POJOAQUE	Santa Fe
DEMING	Luna	PORTALES	Roosevelt
DES MOINES	Union	QUEMADO	Catron
DEXTER	Chaves	QUESTA	Taos
DORA	Roosevelt	RATON	Colfax
DULCE	Rio Arriba	RESERVE	Catron
ELIDA	Roosevelt	RIO RANCHO	Sandoval
ESPANOLA	Rio Arriba	ROSWELL	Chaves
ESTANCIA	Torrance	ROY	Harding
EUNICE	Lea	RUIDOSO	Lincoln
FARMINGTON	San Juan	SAN JON	Quay
FLOYD	Roosevelt	SANTA FE	Santa Fe
FT. SUMNER	De Baca	SANTA ROSA	Guadalupe
GADSDEN	Dona Ana	SILVER CONS.	Grant
GALLUP	McKinley	SOCORRO	Socorro
GRADY	Curry	SPRINGER	Colfax
GRANTS	Cibola	TAOS	Taos
HAGERMAN	Chaves	TATUM	Lea
HATCH	Dona Ana	TEXICO	Curry
HOBBS	Lea	TRUTH OR CONSEQ.	Sierra
HONDO	Lincoln	TUCUMCARI	Quay
HOUSE	Quay	TULAROSA	Otero
JAL	Lea	VAUGHN	Guadalupe
JEMEZ MOUNTAIN	Rio Arriba	WAGON MOUND	Mora
JEMEZ VALLEY	Sandoval	ZUNI	McKinley
LAKE ARTHUR	Chaves		

BY COUNTY			
COUNTY	DISTRICT	COUNTY	DISTRICT
BERNALILLO	Albuquerque	MORA	Mora
CATRON	Reserve	OTERO	Wagon Mound
	Quemado		Alamogordo
CHAVES	Roswell		Tularosa
	Hagerman	QUAY	Cloudcroft
	Dexter		Tucumcari
	Lake Arthur		House
CIBOLA	Grants		Logan
COLFAX	Cimarron		San Jon
	Raton	RIO ARRIBA	Chama
	Springer		Dulce
	Maxwell		Espanola
CURRY	Clovis	ROOSEVELT	Jemez Mountain
	Texico		Portales
	Melrose		Elida
	Grady		Floyd
DE BACA	Ft. Sumner		Dora
DONA ANA	Las Cruces	SANDOVAL	Bernalillo
	Hatch		Cuba
	Gadsden		Jemez Valley
EDDY	Carlsbad		Rio Rancho
	Loving	SAN JUAN	Aztec
	Artesia		Farmington
	Silver Cons.		Bloomfield
GRANT	Cobre		Central
	Santa Rosa	SAN MIGUEL	Las Vegas West
GUADALUPE	Vaughn		Las Vegas City
	Roy		Pecos
HARDING	Mosquero	SANTA FE	Santa Fe
	Lordsburg		Pojoaque
	Animas	SIERRA	Truth or Conseq.
HIDALGO	Lovington	SOCORRO	Socorro
	Eunice		Magdalena
LEA	Hobbs	TAOS	Taos
	Jal		Penasco
	Tatum		Mesa Vista
LINCOLN	Ruidoso		Questa
	Carrizozo	TORRANCE	Estancia
	Corona		Moriarty
	Hondo		Mountainair
	Capitan	UNION	Clayton
LOS ALAMOS	Los Alamos		Des Moines
LUNA	Deming	VALENCIA	Los Lunas
MCKINLEY	Gallup		Belen
	Zuni		

SCHOOL DISTRICTS, SUPERINTENDENTS, AND TELEPHONE NUMBERS  
2006-2007

SUPERINTENDENT	DISTRICT	ADDRESS	PHONE #	FAX #
Clarissa Johnson, Interim	Alamogordo Public Schools	P. O. Box 650, Alamogordo, NM 88311-0650	439-3270	439-3220
Dr. Elizabeth Everitt, Ph. D.	Albuquerque Public Schools	P. O. Box 25704, Albuquerque, NM 87125	880-3744	872-8855
Jerry Birdwell	Animas Public Schools	P. O. Box 85, Animas, NM 88020	548-2299	548-2388
James M. Phipps	Artesia Public Schools	1106 West Quay Avenue, Artesia, NM 88210	746-3585	746-6232
Linda Paul	Aztec Municipal Schools	1118 W. Aztec Blvd., Aztec, NM 87410	334-9474	334-9861
Kenneth Griego	Belen Consolidated Schools	520 North Main, Belen, NM 87002	966-1000	966-1050
Barbara Vigil-Lowder	Bernalillo Public Schools	224 North Camino Del Pueblo, Bernalillo, NM 87004	867-2317	867-7850
Randy Allison	Bloomfield Municipal Schools	325 N. Bergin Lane, Bloomfield, NM 87413	632-4316	632-4371
Dr. C. Larry Miller	Capitan Municipal Schools	P. O. Box 278, Capitan, NM 88316	354-2239	354-2240
Ronald Owen	Carlsbad Municipal Schools	408 North Canyon, Carlsbad, NM 88220	234-3300	234-3367
Sergio Castanon	Carrizozo Municipal Schools	P. O. Box 99, Carrizozo, NM 88301-0099	648-2348	648-2216
Dr. Linda Besett	Central Consolidated Schools	P.O. Box 1199, Shiprock, NM 87420	368-4984	368-5232
Manuel F. Valdez	Chama Valley Independent Schools	P. O. Drawer 10, Tierra Amarilla, NM 87575	588-7285	588-7860
Dr. Annette Johnson	Cimarron Public Schools	P. O. Box 605, Cimarron, NM 87714	376-2445	376-2442
Jack Wiley	Clayton Public Schools	323 South Fifth, Clayton, NM 88415	374-9611	374-9881
Tommy Hancock	Cloudcroft Municipal Schools	P. O. Box 198, Cloudcroft, NM 88317	682-2361	682-2921
Rhonda Seidenwurm	Clovis Municipal Schools	P.O. Box 19000, Clovis, NM 88102-9000	769-4300	769-4334
Harrell Holder	Cobre Consolidated Schools	P. O. Box 1000, Bayard, NM 88023	537-4514	537-5455
Travis Lightfoot	Corona Public Schools	P.O. Box 258, Corona, NM 88318	849-1911	849-2026
Victor Velarde	Cuba Independent Schools	P. O. Box 70, Cuba, NM 87013	289-3211	289-3314
Harvielee Moore	Deming Public Schools	1001 S. Diamond Avenue, Deming, NM 88030	546-884	546-0991
Jayne Burchard	Des Moines Municipal Schools	P. O. Box 38, Des Moines, NM 88418	278-2611	278-2617
Patricia Parsons	Dexter Consolidated Schools	P. O. Box 159, Dexter, NM 88230	734-5420	734-6813
Steve Barron, Interim	Dora Consolidated Schools	P. O. Box 327, Dora, NM 88115	477-2216	477-2464
Dr. Ralph Friedly	Dulce Independent Schools	P. O. Box 547, Dulce, NM 87528	759-3353	759-3533
Jack Burch	Elida Municipal Schools	P. O. Box 8, Elida, NM 88116	274-6211	274-6213
David Cockerham	Espanola Public Schools	714 Calle Don Diego, Espanola, NM 87532	753-2254	747-3514
Carolyn Allen Renteria	Estancia Municipal Schools	P. O. Box 68, Estancia, NM 87016	384-2001	384-2015
Larry Harvey	Eunice Public Schools	P. O. Box 129, Eunice, NM 88231	394-2524	394-3006
Janel Ryan	Farmington Municipal Schools	P.O. Box 5850, Farmington, NM 87499-5850	324-9840	599-8806
Paul Benoit	Floyd Municipal Schools	P. O. Box 65, Floyd, NM 88118	478-2211	478-2811
Patricia Miller	Fort Sumner Municipal Schools	P. O. Box 387, Fort Sumner, NM 88119	355-7734	355-7716
Ronald Haugen	Gadsden Independent Schools	P. O. Drawer 70, Anthony, NM 88021	882-6203	882-6229
Karen White	Gallup-McKinley County Public Schools	P. O. Box 1318, Gallup, NM 87305	722-7711	721-1199
Joel Shirley	Grady Municipal Schools	P. O. Box 71, Grady, NM 88120	357-2192	357-2000
Kilino Marquez	Grants-Cibola County Schools	P. O. Box 8, Grants, NM 87020	285-2603	285-2628
Louis Mestas	Hagerman Municipal Schools	P. O. Drawer B, Hagerman, NM 88232-7501	752-3254	752-3255
Dane Kennon	Hatch Valley Public Schools	P. O. Box 790, Hatch, NM 87937	267-8200	267-8210
Cliff Burch	Hobbs Municipal Schools	P. O. Box 1030, Hobbs, NM 88240	433-0100	433-0140

SCHOOL DISTRICTS, SUPERINTENDENTS, AND TELEPHONE NUMBERS  
2006-2007

SUPERINTENDENT	DISTRICT	ADDRESS	PHONE #	FAX #
John C. MacCallum	Hondo Valley Public Schools	P. O. Box 55, Hondo, NM 88336	653-4411	653-4414
Art Brokenbek	House Municipal Schools	P. O. Box 673, House, NM 88121	279-7353	279-6133
Rick Ferguson	Jal Public Schools	P. O. Box 1386, Jal, NM 88252	395-2101	395-2146
Adan Delgado	Jemez Mountain Public Schools	P. O. Box 230, Gallina, NM 87017	638-5419	638-5571
Sandra Henson	Jemez Valley Public Schools	8501 Highway 4, Jemez Pueblo, NM 87024	834-7391	834-7394
Michael Grossman	Lake Arthur Municipal Schools	P. O. Box 98, Lake Arthur, NM 88253	365-2000	365-2002
Stan Rounds	Las Cruces Public Schools	505 S. Main Ste. 249, Las Cruces, NM 88001	527-5830	527-5972
Dr. Pete Campos	Las Vegas City Public Schools	901 Douglas Avenue, Las Vegas, NM 87701	454-5700	454-6965
Joe Baca	Las Vegas West Public Schools	179 Bridge Street, Las Vegas, NM 87701	426-2333	426-2318
Carolyn Franklin	Logan Municipal Schools	P. O. Box 67, Logan, NM 88426	487-2252	487-9479
Jim Barentine	Lordsburg Municipal Schools	P. O. Box 430, Lordsburg, NM 88045	542-9361	542-9364
Dr. James Anderson	Los Alamos Public Schools	P. O. Drawer 90, Los Alamos, NM 87544	663-2222	661-6300
Walter G. Gibson	Los Lunas Public Schools	P. O. Drawer 1300, Los Lunas, NM 87031	866-8231	865-7766
David Chavez	Loving Municipal Schools	P. O. Box 98, Loving, NM 88256	745-2010	745-2002
Jimmy Derrick	Lovington Municipal Schools	P. O. Box 1537, Lovington, NM 88260	739-2200	739-2205
Mike Chambers	Magdalena Municipal Schools	P. O. Box 24, Magdalena, NM 87825	854-2241	854-2294
Arthur Romero, Interim	Maxwell Municipal Schools	P. O. Box 275, Maxwell, NM 87728	375-2371	375-2375
Dr. Ronald Windom	Melrose Public Schools	P. O. Box 275, Melrose, NM 88124	253-4269	253-4291
Robert Archuleta	Mesa Vista Consolidated Schools	P. O. Box 6, El Rito, NM 87530	581-4504	581-4613
Leroy Sanchez	Mora Independent Schools	P. O. Box 179, Mora, NM 87732-0179	387-3110	387-3111
Karen M. Couch	Moriarty Municipal Schools	P. O. Box 2000, Moriarty, NM 87035-2000	832-4471	832-4472
Nelda Isaacs	Mosquero Municipal Schools	P. O. Box 258, Mosquero, NM 87733	673-2271	673-2305
Jay Mortensen	Mountainair Public Schools	P. O. Box 456, Mountainair, NM 87036	847-2333	847-2843
Roy Herrera	Pecos Independent Schools	P. O. Box 368, Pecos, NM 87552	757-4700	757-8721
Dorothy Sanchez	Penasco Independent Schools	P. O. Box 520, Penasco, NM 87553	587-2230	587-2513
Toni Nolan-Trujillo	Pojoaque Valley Public Schools	P. O. Box 3468 Pojoaque Station, Santa Fe, NM 87501-04	455-2282	455-7152
Randy Fowler	Portales Municipal Schools	501 South Abilene, Portales, NM 88130	356-6641	356-4377
Bill Green	Quemado Independent Schools	P. O. Box 128, Quemado, NM 87829-0128	773-4700	773-4717
Richard Romero	Questa Independent Schools	P. O. Box 440, Questa, NM 87556	586-1280	586-0531
William R. Walz	Raton Public Schools	P. O. Box 940, Raton, NM 87740	445-9111	445-5641
Loren Cushman	Reserve Independent Schools	P. O. Box 350, Reserve, NM 87830	533-6241	533-6647
Dr. V. Sue Cleveland	Rio Rancho Public Schools	500 Laser Road NE, Rio Rancho, NM 87124	896-0667	896-1169
Michael Gofflieb	Roswell Independent Schools	P. O. Box 1437, Roswell, NM 88201	627-2511	627-2512
Richard Hazen	Roy Municipal Schools	P. O. Drawer 430, Roy, NM 87743	485-2242	485-2497
Dr. Paul Wirth, Ed.D.	Ruidoso Municipal Schools	200 Horton Circle, Ruidoso, NM 88345	257-4051	257-4150
Gary Salazar	San Jon Municipal Schools	P. O. Box 5, San Jon, NM 88434	576-2466	576-2772
Dr. Leslie Carpenter	Santa Fe Public Schools	610 Alta Vista St., Santa Fe, NM 87501-4197	467-2003	995-3300
Daniel B. Flores	Santa Rosa Consolidated Schools	344 Fourth Street, Santa Rosa, NM 88435	472-3171	472-5609
Dick Pool	Silver Consolidated Schools	2810 North Swan Street, Silver City, NM 88061	956-2000	956-2039

SCHOOL DISTRICTS, SUPERINTENDENTS, AND TELEPHONE NUMBERS  
2006-2007

SUPERINTENDENT	DISTRICT	ADDRESS	PHONE #	FAX #
Dr. Cheryl Wilson	Socorro Consolidated Schools	P.O. Box 1157, Socorro, NM 87801	835-0300	835-1682
Zita Rae Lopez	Springer Municipal Schools	P. O. Box 308, Springer, NM 87747	483-2482	483-2387
Dr. Marc Space	Taos Municipal Schools	213 Paseo del Canon, Taos, NM 87571	758-5202	758-5298
T. J. Parks	Tatum Municipal Schools	P. O. Box 685, Tatum, NM 88267	398-4455	398-8220
Dr. R. L. Richards	Texico Municipal Schools	P. O. Box 237, Texico, NM 88135	482-3801	482-3650
Jim Nesbitt	Truth or Consequences Municipal Schools	180 North Date Street, T or C, NM 87901	894-8150	894-7532
Aaron McKinney	Tucumcari Public Schools	P. O. Box 1046, Tucumcari, NM 88401	461-3910	461-3554
Brenda Vigil	Tularosa Municipal Schools	504 First Street, Tularosa, NM 88352	585-8800	585-4439
Lorena García	Vaughn Municipal Schools	P. O. Box 489, Vaughn, NM 88353-0489	584-2283	584-2255
Albert Martinez	Wagon Mound Public Schools	P. O. Box 158, Wagon Mound, NM 87752	666-3001	666-9001
Dr. Kaye Peery	Zuni Public Schools	P. O. Drawer A, Zuni, NM 87327	782-5511	782-5870

NUMBER OF SCHOOL DISTRICTS IN THE STATE

COUNTY	1950- 1959	1960- 1969	1970- 1979	1980- 1989	1990- 2007
BERNALILLO	1	1	1	1	1
CATRON	14	2	2	2	2
CHAVES	24	10	4	4	4
CIBOLA	0	0	0	1	1
COLFAX	27	4	4	4	4
CURRY	9	4	4	4	4
DE BACA	4	1	1	1	1
DONA ANA	12	3	3	3	3
EDDY	9	3	3	3	3
GRANT	16	3	2	2	2
GUADALUPE	19	2	2	2	2
HARDING	11	2	2	2	2
HIDALGO	5	4	2	2	2
LEA	6	5	5	5	5
LINCOLN	17	5	5	5	5
LOS ALAMOS	1	1	1	1	1
LUNA	8	1	1	1	1
McKINLEY	9	1	1	1	2
MORA	4	2	2	2	2
OTERO	10	3	3	3	3
QUAY	15	4	4	4	4
RIO ARRIBA	52	27	4	4	4
ROOSEVELT	8	5	5	4	4
SAN JUAN	10	4	4	4	4
SAN MIGUEL	47	24	3	3	3
SANDOVAL	20	3	3	3	4
SANTA FE	19	3	2	2	2
SIERRA	15	1	1	1	1
SOCORRO	24	3	2	2	2
TAOS	9	8	4	4	4
TORRANCE	22	4	4	3	3
UNION	13	11	2	2	2
VALENCIA	3	3	3	2	2
<b>TOTALS</b>	463	157	89	87	89

NUMBER OF CHARTER SCHOOLS IN THE STATE

DISTRICTS	CHARTERS	PRIOR TO 1999	1999- 2000	2000- 2001	2001- 2002	2002- 2003	2003- 2004	2004- 2005	2005- 2006	2006- 2007
ALAMOGORDO	Lacy Simms Middle School						X	X	X	X
ALBUQUERQUE	Academia de Lengua y Cultura						X	X	X	X
	Alb. Inst. for Mathmatics & Science (AIMS) (aka High Tech High)								X	X
	Amy Biehl Charter H.S.			X	X	X	X	X	X	X
	Cesar Chavez Community School							X	X	X
	Charter Vocational High School					X	X	X	X	X
	Charter Vo-Tech Center (combined with Charter Vocational)							X	X	
	Christine Duncan Community School									X
	Creative Education Preparatory Institute #1							X	X	X
	Creative Education Preparatory Institute #2							X	X	X
	East Mountain High School			X	X	X	X	X	X	X
	Horizon Academy Preparatory High								X	
	Horizon Academy South					X	X	X	X	X
	Horizon Academy West					X	X	X	X	X
	La Academia de Esperanza						X	X	X	X
	La Luz del Monte								X	X
	La Resolana									X
	La Promesa Early Learning								X	X
	Learning Community Charter School (The)				X	X	X	X	X	X
	Los Puentes Charter School					X	X	X	X	X
	Montessori Elementary								X	X
	Montessori of the Rio Grande							X	X	X
	Mountain Mahogany Community								X	X
	Native American Community Academy									X
	North Albuquerque Co-Op Community									X
	North Valley Academy (aka Horizon Academy Northwest)						X	X	X	X
	Nuestros Valores Charter School				X	X	X	X	X	X
	Paseo del Monte Middle School						X	X		
	Public Academy for Performing Arts				X	X	X	X	X	X
	Ralph J. Bunche Academy									X
	Robert F. Kennedy Charter School				X	X	X	X	X	X
	SIA Tech							X	X	X
	South Valley Academy			X	X	X	X	X	X	X
	Southwest Primary Learning Center								X	X
	Southwest Secondary Learning Center				X	X	X	X	X	X
	Twenty-First Century Charter School			X	X	X	X	X	X	X
	Youth Build Community								X	X
AZTEC	Mosaic Academy Charter									X
BERNALILLO	Village Academy									X
CARLSBAD	Jefferson Montessori Academy					X	X	X	X	X
CIMARRON	Moreno Valley High School					X	X	X	X	X
CLAYTON	Amistad Charter School			X	X	X	X	X	X	X
DEMING	Deming Cesar Chavez Charter High School									X
ESPANOLA	Carinos De Los Ninos									X
	Espanola Military Academy							X	X	X
GALLUP-McKINLEY	Middle College High School					X	X	X	X	X
JEMEZ VALLEY	San Diego Riverside Charter School		X	X	X	X	X	X	X	X
	Walatowa Charter High School						X	X	X	X
JEMEZ MOUNTAIN	Lindrith Area Heritage Charter School									X

NUMBER OF CHARTER SCHOOLS IN THE STATE

DISTRICTS	CHARTERS	PRIOR TO 1999	1999- 2000	2000- 2001	2001- 2002	2002- 2003	2003- 2004	2004- 2005	2005- 2006	2006- 2007
LAS CRUCES	Alma D' Arte Charter High School							X	X	X
	La Academia Dolores Huerta (aka La Acad. de Idiomas y Cultura)							X	X	X
LAS VEGAS CITY	Bridge Academy Charter High School					X	X	X	X	X
LAS VEGAS WEST	Rio Gallinas School							X	X	X
QUESTA	Red River Valley Charter School				X	X	X	X	X	X
	Roots and Wings Community School				X	X	X	X	X	X
ROSWELL	Sidney Gutierrez Middle School				X	X	X	X	X	X
SANTA FE	Academy for Tech. & Classics				X	X	X	X	X	X
	Charter School 37									X
	Monte del Sol Charter School			X	X	X	X	X	X	X
	Turquoise Trail Elementary	X	X	X	X	X	X	X	X	X
SILVER CITY	Aldo Leopold								X	X
SOCORRO	Cottonwood Valley Charter School				X	X	X	X	X	X
TAOS	Anansi Charter School			X	X	X	X	X	X	X
	Taos Municipal Charter School			X	X	X	X	X	X	X
<b>TOTALS</b>		1	2	10	20	27	34	44	52	61