

SECTION B

Membership
Program Units
Enrollment Data



2003-2004 STATE MEMBERSHIP

District	2003-2004 Operating Budget Membership ¹	2003-2004 40th Day Membership ²	2003-2004 Final Funded Membership ¹	Difference Operating Budget Versus 40-Day Mem	Percent Difference	Difference 40-Day Mem Versus Funded Mem	Percent Change	Difference Operating Budget Versus Funded Mem	Percent Change
ALAMOGORDO ³	6,827.17	6,849.00	6,874.67	(21.8)	-0.32%	(25.7)	-0.37%	(47.5)	-0.70%
ALBUQUERQUE ³	88,434.51	89,007.00	87,834.19	(572.5)	-0.65%	1,172.8	1.32%	600.3	0.68%
ANIMAS	297.33	289.50	297.33	7.8	2.63%	(7.8)	-2.70%	0.0	0.00%
ARTESIA	3,569.49	3,507.00	3,571.99	62.5	1.75%	(65.0)	-1.85%	(2.5)	-0.07%
AZTEC	3,193.16	3,210.50	3,202.66	(17.3)	-0.54%	7.8	0.24%	(9.5)	-0.30%
BELEN	4,802.15	4,847.00	4,806.15	(44.9)	-0.93%	40.9	0.84%	(4.0)	-0.08%
BERNALILLO	3,388.99	3,362.00	3,386.49	27.0	0.80%	(24.5)	-0.73%	2.5	0.07%
BLOOMFIELD	3,069.49	3,146.00	3,069.49	(76.5)	-2.49%	76.5	2.43%	0.0	0.00%
CAPITAN	592.84	596.50	592.34	(3.7)	-0.62%	4.2	0.70%	0.5	0.08%
CARLSBAD ³	6,174.51	6,162.50	6,168.51	12.0	0.19%	(6.0)	-0.10%	6.0	0.10%
CARRIZOZO	221.34	216.50	225.34	4.8	2.19%	(8.8)	-4.08%	(4.0)	-1.81%
CENTRAL CONS.	6,946.50	6,817.50	6,946.50	129.0	1.86%	(129.0)	-1.89%	0.0	0.00%
CHAMA VALLEY	495.00	485.00	495.00	10.0	2.02%	(10.0)	-2.06%	0.0	0.00%
CIMARRON ⁴	558.18	539.50	557.18	18.7	3.35%	(17.7)	-3.28%	1.0	0.18%
CLAYTON ³	599.84	581.00	599.84	18.8	3.14%	(18.8)	-3.24%	0.0	0.00%
CLOUDCROFT	436.49	425.50	436.49	11.0	2.52%	(11.0)	-2.58%	(0.0)	0.00%
LOVIS	8,006.33	8,103.00	8,020.83	(96.7)	-1.21%	82.2	1.01%	(14.5)	-0.18%
COBRE CONS.	1,674.66	1,535.00	1,674.66	139.7	8.34%	(139.7)	-9.10%	0.0	0.00%
CORONA	80.00	97.00	80.00	(17.0)	-21.26%	17.0	17.53%	0.0	0.00%
CUBA	846.66	793.00	846.66	53.7	6.34%	(53.7)	-6.77%	0.0	0.00%
DEMING	5,283.65	5,451.00	5,283.65	(167.4)	-3.17%	167.4	3.07%	0.0	0.00%
DES MOINES	143.65	146.50	143.65	(2.8)	-1.98%	2.8	1.95%	0.0	0.00%
DEXTER	1,052.17	1,102.00	1,052.17	(49.8)	-4.74%	49.8	4.52%	0.0	0.00%
DORA	233.34	215.00	233.34	18.3	7.86%	(18.3)	-8.53%	0.0	0.00%
DULCE	670.01	669.50	670.01	0.5	0.08%	(0.5)	-0.08%	0.0	0.00%
ELIDA	114.84	120.50	115.84	(5.7)	-4.93%	4.7	3.87%	(1.0)	-0.87%
ESPAÑOLA	4,849.50	4,923.00	4,849.51	(73.5)	-1.52%	73.5	1.49%	(0.0)	0.00%
ESTANCIA	879.00	878.50	872.50	0.5	0.06%	6.0	0.68%	6.5	0.74%
EUNICE	591.84	593.00	591.84	(1.2)	-0.20%	1.2	0.20%	0.0	0.00%
FARMINGTON	9,942.01	9,951.00	9,970.51	(9.0)	-0.09%	(19.5)	-0.20%	(28.5)	-0.29%
FLOYD	271.50	283.00	271.01	(11.5)	-4.23%	12.0	4.24%	0.5	0.18%
FT. SUMNER	325.16	308.50	325.17	16.7	5.12%	(16.7)	-5.40%	(0.0)	0.00%
GADSDEN	13,042.83	13,622.50	13,042.83	(579.7)	-4.44%	579.7	4.26%	0.0	0.00%
GALLUP-McKINLEY ³	13,469.53	13,542.00	13,468.03	(72.5)	-0.54%	74.0	0.55%	1.5	0.01%
GRADY	112.33	125.50	112.33	(13.2)	-11.72%	13.2	10.49%	0.0	0.00%
GRANTS	3,628.00	3,688.50	3,628.00	(60.5)	-1.67%	60.5	1.64%	0.0	0.00%
HAGERMAN	485.30	465.00	485.31	20.3	4.18%	(20.3)	-4.37%	(0.0)	0.00%
HATCH	1,490.66	1,540.00	1,490.66	(49.3)	-3.31%	49.3	3.20%	0.0	0.00%
HOBBS	7,224.51	7,235.00	7,224.51	(10.5)	-0.15%	10.5	0.14%	0.0	0.00%
HONDO	129.83	141.00	129.83	(11.2)	-8.61%	11.2	7.93%	0.0	0.00%
HOUSE	172.33	159.00	172.33	13.3	7.74%	(13.3)	-8.38%	0.0	0.00%
JAL	417.49	411.00	423.50	6.5	1.56%	(12.5)	-3.04%	(6.0)	-1.44%
JEMEZ MOUNTAIN	362.49	377.00	362.49	(14.5)	-4.00%	14.5	3.85%	0.0	0.00%
JEMEZ VALLEY ³	549.50	502.50	505.50	47.0	8.55%	(3.0)	-0.60%	44.0	8.01%
LAKE ARTHUR	193.50	176.50	193.51	17.0	8.79%	(17.0)	-9.63%	(0.0)	0.00%
LAS CRUCES ³	22,443.34	22,912.50	22,447.84	(469.2)	-2.09%	464.7	2.03%	(4.5)	-0.02%

2003-2004 STATE MEMBERSHIP

District	2003-2004 Operating Budget Membership ¹	2003-2004 40th Day Membership ²	2003-2004 Final Funded Membership ¹	Difference Operating Budget Versus 40-Day Mem	Percent Difference	Difference 40-Day Mem Versus Funded Mem	Percent Change	Difference Operating Budget Versus Funded Mem	Percent Change
LAS VEGAS CITY ³	2,262.16	2,196.50	2,271.16	65.7	2.90%	(74.7)	-3.40%	(9.0)	-0.40%
LAS VEGAS WEST	2,036.50	2,000.50	2,036.51	36.0	1.77%	(36.0)	-1.80%	(0.0)	0.00%
LOGAN	249.50	216.50	249.50	33.0	13.23%	(33.0)	-15.24%	0.0	0.00%
LORDSBURG	773.16	725.50	773.16	47.7	6.16%	(47.7)	-6.57%	0.0	0.00%
LOS ALAMOS	3,518.00	3,516.50	3,518.00	1.5	0.04%	(1.5)	-0.04%	0.0	0.00%
LOS LUNAS	8,260.51	8,503.50	8,265.01	(243.0)	-2.94%	238.5	2.80%	(4.5)	-0.05%
LOVING	535.34	587.00	535.34	(51.7)	-9.65%	51.7	8.80%	0.0	0.00%
LOVINGTON	2,726.67	2,810.50	2,730.17	(83.8)	-3.07%	80.3	2.86%	(3.5)	-0.13%
MAGDALENA	342.48	381.50	342.48	(39.0)	-11.39%	39.0	10.23%	0.0	0.00%
MAXWELL	119.68	108.50	119.68	11.2	9.34%	(11.2)	-10.30%	0.0	0.00%
MELROSE	213.01	237.50	213.01	(24.5)	-11.50%	24.5	10.31%	0.0	0.00%
MESA VISTA	517.49	503.50	517.49	14.0	2.70%	(14.0)	-2.78%	0.0	0.00%
MORA	658.17	643.50	658.18	14.7	2.23%	(14.7)	-2.28%	(0.0)	0.00%
MORIARTY	4,199.83	4,166.50	4,201.83	33.3	0.79%	(35.3)	-0.85%	(2.0)	-0.05%
MOSQUERO	50.33	59.00	50.33	(8.7)	-17.23%	8.7	14.69%	0.0	0.00%
MOUNTAINAIR	360.33	367.50	360.33	(7.2)	-1.99%	7.2	1.95%	0.0	0.00%
PECOS	857.66	859.50	857.66	(1.8)	-0.21%	1.8	0.21%	(0.0)	0.00%
PEÑASCO	626.49	617.00	626.50	9.5	1.52%	(9.5)	-1.54%	(0.0)	0.00%
POJOAQUE	1,930.34	1,906.00	1,937.85	24.3	1.26%	(31.8)	-1.67%	(7.5)	-0.39%
PORTALES	2,756.01	2,836.00	2,756.02	(80.0)	-2.90%	80.0	2.82%	(0.0)	0.00%
QUEMADO	181.18	172.00	181.18	9.2	5.07%	(9.2)	-5.33%	0.0	0.00%
QUESTA ³	587.36	567.00	587.36	20.4	3.47%	(20.4)	-3.59%	0.0	0.00%
RATON	1,459.48	1,401.00	1,459.48	58.5	4.01%	(58.5)	-4.17%	(0.0)	0.00%
RESERVE	218.16	189.50	218.17	28.7	13.14%	(28.7)	-15.13%	(0.0)	0.00%
RIO RANCHO	10,784.17	11,338.00	10,784.18	(553.8)	-5.14%	553.8	4.88%	(0.0)	0.00%
ROSWELL ³	9,272.67	9,299.00	9,297.67	(26.3)	-0.28%	1.3	0.01%	(25.0)	-0.27%
ROY	111.15	91.00	111.16	20.2	18.13%	(20.2)	-22.15%	(0.0)	0.00%
RUIDOSO	2,295.65	2,361.50	2,295.65	(65.8)	-2.87%	65.8	2.79%	0.0	0.00%
SAN JON	168.00	168.50	168.01	(0.5)	-0.30%	0.5	0.29%	(0.0)	0.00%
SANTA FE ³	13,435.84	13,532.50	13,462.84	(96.7)	-0.72%	69.7	0.51%	(27.0)	-0.20%
SANTA ROSA	729.51	699.00	729.51	30.5	4.18%	(30.5)	-4.36%	0.0	0.00%
SILVER CITY CONS.	3,329.67	3,253.50	3,328.17	76.2	2.29%	(74.7)	-2.30%	1.5	0.05%
SOCORRO ³	2,064.17	2,056.00	2,062.17	8.2	0.40%	(6.2)	-0.30%	2.0	0.10%
SPRINGER	242.32	222.00	242.32	20.3	8.39%	(20.3)	-9.15%	0.0	0.00%
TAOS ³	3,250.52	3,259.50	3,250.52	(9.0)	-0.28%	9.0	0.28%	0.0	0.00%
TATUM	297.83	299.50	297.84	(1.7)	-0.56%	1.7	0.56%	(0.0)	0.00%
TEXICO	491.65	517.50	491.66	(25.8)	-5.26%	25.8	4.99%	(0.0)	0.00%
TRUTH OR CONSEQ.	1,664.51	1,615.00	1,664.51	49.5	2.97%	(49.5)	-3.07%	0.0	0.00%
TUCUMCARI	1,136.83	1,124.50	1,136.83	12.3	1.08%	(12.3)	-1.10%	0.0	0.00%
TULAROSA	996.17	979.00	996.18	17.2	1.72%	(17.2)	-1.75%	(0.0)	0.00%
VAUGHN	84.34	96.50	84.34	(12.2)	-14.42%	12.2	12.60%	0.0	0.00%
WAGON MOUND	171.16	170.50	171.16	0.7	0.39%	(0.7)	-0.39%	0.0	0.00%
ZUNI	1,749.50	1,704.50	1,749.50	45.0	2.57%	(45.0)	-2.64%	0.0	0.00%
STATEWIDE	316,008.4	318,469.0	315,542.6	(2,460.6)	-0.78%	2,926.4	0.92%	465.8	0.15%

NOTE: State membership includes grades 1-12, special education C, D, 3 and 4 year old, D-nonprofit (private special education), and early childhood education FTE.

¹Because of the funding formula revisions, which went into effect on July 1, 1999 (Laws of 1999, Chapter 275, Section 1), membership for 2002-2003 was used to determine funding for 2003-2004.

²The 2003-2004, 40th day membership is shown here for comparison purposes only.

³ The membership for these districts includes Charter Schools.

STATEWIDE FINAL FUNDED MEMBERSHIP BY GRADE
1993-1994 THROUGH 2003-2004

	Grade 1	Grade 2	Grade 3	Grade 4	Grade 5	Grade 6	Grade 7	Grade 8	Grade 9	Grade 10	Grade 11	Grade 12	Sub-Total 1-12	E.C.E. FTE	Spec. Ed. ^{1,2} C, D & NP	TOTAL ³
1993-94 (40 Day/Dec 1)	25,939.0	24,868.0	24,438.0	24,065.0	24,533.0	23,814.0	23,695.0	22,806.0	25,117.0	22,022.0	18,768.0	15,614.0	275,679.0	11,815.5	22,372.0	309,866.5
1994-95 (40 Day/Dec 1)	25,703.0	24,810.0	24,466.0	24,224.0	23,969.0	24,113.0	23,795.0	23,291.0	26,468.0	22,253.0	18,822.0	15,880.0	277,794.0	12,014.0	24,144.0	313,952.0
Difference	(236.0)	(58.0)	28.0	159.0	(564.0)	299.0	100.0	485.0	1,351.0	231.0	54.0	266.0	2,115.0	198.5	1,772.0	4,085.5
Percent Change	-0.9%	-0.2%	0.1%	0.7%	-2.3%	1.3%	0.4%	2.1%	5.4%	1.0%	0.3%	1.7%	0.8%	1.7%	7.9%	1.3%
1995-96 (40 Day/Dec 1)	26,079.0	24,591.0	24,279.0	24,088.0	24,204.0	23,545.0	23,998.0	23,568.0	27,030.0	23,243.0	18,869.0	16,010.0	279,504.0	12,144.0	25,783.0	317,431.0
Difference	140.0	(277.0)	(159.0)	23.0	(329.0)	(269.0)	303.0	762.0	1,913.0	1,221.0	101.0	396.0	3,825.0	328.5	3,411.0	4,085.5
Percent Change	0.5%	-1.1%	-0.7%	0.1%	-1.3%	-1.1%	1.3%	3.3%	7.6%	5.5%	0.5%	2.5%	1.4%	2.8%	15.2%	1.3%
1996-97 (40 Day/Dec 1)	26,177.0	25,010.0	24,016.0	23,945.0	23,854.0	23,691.0	23,265.0	23,617.0	27,597.0	23,397.0	19,623.0	15,964.0	280,156.0	12,137.0	27,098.0	319,391.0
Difference	98.0	419.0	(263.0)	(143.0)	(350.0)	146.0	(733.0)	49.0	567.0	154.0	754.0	(46.0)	652.0	(7.0)	1,315.0	1,960.0
Percent Change	0.38%	1.70%	-1.08%	-0.59%	-1.45%	0.62%	-3.05%	0.21%	2.10%	0.66%	4.00%	-0.29%	0.23%	-0.06%	5.10%	0.62%
1997-98 (40 Day/Dec 1)	26,762.0	26,036.0	25,788.0	25,558.0	25,925.0	25,764.0	26,058.0	25,578.0	29,930.0	26,259.0	21,978.0	18,103.0	303,739.0	14,038.0	NA	317,777.0
Difference	585.0	1,026.0	1,772.0	1,613.0	2,071.0	2,073.0	2,793.0	1,961.0	2,333.0	2,862.0	2,355.0	2,139.0	23,583.0	1,901.0	NA	(1,614.0)
Percent Change	2.23%	4.10%	7.38%	6.74%	8.68%	8.75%	12.01%	8.30%	8.45%	12.23%	12.00%	13.40%	8.42%	15.66%	NA	-0.51%
1998-99 (40 Day/Dec 1)	26,133.0	25,970.0	25,721.0	25,761.0	25,500.0	25,527.0	25,824.0	25,794.0	29,527.0	26,310.0	21,915.0	18,741.0	302,723.0	13,824.5	NA	316,547.5
Difference	(629.0)	(66.0)	(67.0)	203.0	(425.0)	(237.0)	(234.0)	216.0	(403.0)	51.0	(63.0)	638.0	(1,016.0)	(213.5)	NA	(1,229.5)
Percent Change	-2.35%	-0.25%	-0.26%	0.79%	-1.64%	-0.92%	-0.90%	0.84%	-1.35%	0.19%	-0.29%	3.52%	-0.33%	-1.52%	NA	-0.39%
1999-00 (based on prior year) ⁴	26,142.0	25,978.0	25,728.0	25,770.0	25,509.0	25,533.0	25,844.0	25,807.0	29,527.0	26,310.0	21,915.0	18,741.0	302,804.0	13,829.5	NA	316,633.5
Difference	9.0	8.0	7.0	9.0	9.0	6.0	20.0	13.0	0.0	0.0	0.0	0.0	81.0	5.0	NA	86.0
Percent Change	0.03%	0.03%	0.03%	0.03%	0.04%	0.02%	0.08%	0.05%	0.00%	0.00%	0.00%	0.00%	0.03%	0.04%	NA	0.03%
2000-01 (based on prior year) ⁵	25,360.4	25,243.0	25,699.0	25,555.7	25,509.3	25,066.4	25,132.7	25,315.0	28,880.0	25,057.3	21,403.3	18,756.7	296,978.7	15,155.6	NA	312,134.3
Difference	(781.6)	(735.0)	(29.0)	(214.3)	0.3	(466.6)	(711.3)	(492.0)	(647.0)	(1,252.7)	(511.7)	15.7	(5,825.3)	1,326.1	NA	(4,499.2)
Percent Change	-2.99%	-2.83%	-0.11%	-0.83%	0.00%	-1.83%	-2.75%	-1.91%	-2.19%	-4.76%	-2.33%	0.08%	-1.92%	9.59%	NA	-1.42%
2001-02 (based on prior year) ⁵	24,220.0	24,645.0	24,991.0	25,531.0	25,516.7	25,177.7	25,051.7	24,814.0	28,632.7	25,333.6	21,249.6	18,917.7	294,080.7	18,128.2	NA	312,208.9
Difference	(1,140.4)	(598.0)	(708.0)	(24.7)	7.4	111.3	(81.0)	(501.0)	(247.3)	276.3	(153.7)	161.0	(2,898.0)	2,972.6	NA	74.6
Percent Change	-0.04	-0.02	-0.03	0.00	0.00	0.00	0.00	-0.02	-0.01	0.01	-0.01	0.01	-0.01	0.20	NA	0.000
2002-03 (based on prior year) ⁵	24,011.0	23,971.7	24,916.7	25,231.7	25,816.3	25,478.0	25,424.1	25,046.7	28,379.4	25,623.7	21,575.3	18,564.7	294,039.2	18,997.6	NA	313,036.7
Difference	(209.0)	(673.3)	(74.3)	(299.3)	299.6	300.3	372.3	232.7	(253.3)	290.1	325.7	(353.0)	(41.5)	869.4	NA	827.8
Percent Change	-0.86%	-2.73%	-0.30%	-1.17%	1.17%	1.19%	1.49%	0.94%	-0.88%	1.15%	1.53%	-1.87%	-0.01%	4.80%	NA	0.27%
2003-04 (based on prior year) ⁵	23,839.7	23,700.0	24,112.3	25,139.0	25,408.0	25,951.7	25,543.4	25,657.5	28,281.2	25,508.7	21,554.2	19,176.5	293,871.9	21,670.7	NA	315,542.6
Difference	(171.3)	(271.7)	(804.4)	(92.7)	(408.4)	473.7	119.3	610.8	(98.2)	(115.1)	(21.1)	611.8	(167.2)	2,673.1	NA	2,505.8
Percent Change	-0.86%	-2.73%	-0.30%	-1.17%	1.17%	1.19%	1.49%	0.94%	-0.88%	1.15%	1.53%	-1.87%	-0.01%	4.80%	NA	0.27%

¹Spec. Ed. D Includes three and four year old developmentally disabled beginning 1987-88 through 1996-97:

¹1992-93 - 1,257 four year old, 799 three year old.

1994-95 - 1,676 four year old, 1,184 three year old.

1996-97 - 1,611 four year old, 1,877 three year old.

¹1993-94 - 1,344 four year old, 1,089 three year old.

1995-96 - 1,746 four year old, 1,563 three year old.

²Prior to 1997-98, three and four year old developmentally disabled students and students receiving C and D level special education services were counted apart from the grade level counts.

Beginning in 1997-98, all students are counted at grade level (Laws of 1997, Chapter 40).

³Difference in "TOTAL" due to rounding by grade level.

⁴1999-2000 Funding was based on 1998-1999 Final Funded Membership(Laws of 1999, Chapter 275). The only adjustment made was to include 1999-2000 membership for the San Diego Riverside Charter School

⁵Current year funding was based on the prior year Final Funded Membership (Laws of 1999, Chapter 275). The only adjustment made was to include current year membership for startup Charter Schools.

MEMBERSHIP, PROGRAM UNITS, PROGRAM DOLLARS
2003-2004, 2004-2005

	STUDENT MEMBERSHIP ¹			PROGRAM UNITS			PROGRAM DOLLARS		
	2003-2004	2004-2005	2004-2005	2003-2004	2004-2005	2004-2005	2003-2004	2004-2005	2004-2005
	Actual	Appropriated Membership	Budgeted	Actual	Appropriated Units	Budgeted	\$2,976.20 Per Unit	\$3,035.15 Appropriated	\$3,035.15 Budgeted at
ECE FTE	21,670.65	27,023.14	25,469.99	31,205.739	38,913.322	36,676.786	\$92,874,520	\$118,107,769	\$111,319,547
Grades 1-12	293,871.91	295,466.00	295,710.12	347,118.858	349,425.485	349,689.891	\$1,033,095,145	\$1,060,558,761	\$1,061,361,273
Special Education:									
A/B Membership	35,895.51	35,915.00	36,229.47	25,126.857	25,140.500	25,360.629	\$74,782,552	\$76,305,189	\$76,973,313
Class C	12,343.16	12,188.00	12,270.55	12,343.160	12,188.000	12,270.550	\$36,735,713	\$36,992,408	\$37,242,960
Class D	11,837.19	11,164.00	11,180.09	23,674.380	22,328.000	22,360.180	\$70,459,690	\$67,768,829	\$67,866,500
3 & 4-yr. Develop. Delayed	3,747.34	3,552.00	4,002.98	7,494.680	7,104.000	8,005.960	\$22,305,667	\$21,561,706	\$24,299,289
Related Services FTE	1,773.07	1,747.94	1,764.84	44,326.750	43,698.500	44,121.000	\$131,925,273	\$132,631,502	\$133,913,853
Bilingual FTE	24,105.07	23,052.35	22,900.43	12,052.535	11,526.175	11,450.215	\$35,870,755	\$34,983,670	\$34,753,120
Fine Arts Program		171,000.00	127,940.15	1,327.999	5,677.200	4,247.612	\$3,952,391	\$17,231,154	\$12,892,140
Training & Experience				48,495.035	52,603.113	52,442.220	\$144,330,923	\$159,658,338	\$159,170,004
National Board Certified Teachers				85.000	127.500	124.500	\$252,977	\$386,982	\$377,876
Size Adjustment				20,973.947	20,973.947	21,985.773	\$62,422,661	\$63,659,075	\$66,730,119
Enrollment Growth				5,768.268	5,768.268	3,354.127	\$17,167,519	\$17,507,559	\$10,180,279
At-Risk				23,227.748	23,406.890	22,673.851	\$69,130,424	\$71,043,422	\$68,818,539
Plus Save Harmless				89.639	210.091	0.000	\$266,784	\$637,658	\$0
Plus At-Risk Save Harmless							\$1,827,888	\$1,883,000	\$1,691,136
Total Membership¹/Units/Dollars	315,542.56	322,489.14	321,180.11	603,310.595	619,090.991	614,763.294	\$1,797,400,881	\$1,880,917,021	\$1,867,589,948
Plus 2004-2005 PED Estimated Start-up Charter Schools/New Programs					4,532.773			\$13,757,646	
TOTAL UNITS/PROGRAM COST				603,310.595	623,623.764	614,763.294	\$1,797,400,881	\$1,892,791,667	\$1,867,589,948
Less Credits:									
Impact Aid (P.L. 874)							(\$50,416,044)	(\$52,580,000)	(\$48,674,665)
Forest Reserve							(\$643,805)	(\$670,000)	(\$643,278)
Local Tax							(\$8,492,800)	(\$7,750,000)	(\$7,984,000)
TOTAL Credits							(\$59,552,649)	(\$61,000,000)	(\$57,301,943)
² Less Cash Balance Credits							(\$8,577,428)		
CALC. STATE EQUALIZATION GUARANTEE							\$1,729,270,804	\$1,831,791,667	\$1,810,288,005
Less Guaranteed Energy Savings							(\$3,388,471)		(\$3,260,272)
DISTRIBUTED STATE EQUALIZATION GUARANTEE							\$1,725,882,333		\$1,807,027,732
APPROPRIATED STATE EQUALIZATION GUARANTEE							\$1,724,906,600	\$1,840,374,600	\$1,810,288,005
³ Plus Excess Credits/Adjustments							\$1,364,204		
Plus Driver's License Fees							\$3,000,000	\$1,700,000	
TOTAL APPROPRIATED FOR STATE EQUALIZATION GUARANTEE							\$1,729,270,804	\$1,842,074,600	

¹ Beginning with the 2000-2001 school year, student membership is based on an average of the 40-, 80-, and 120-day enrollment counts.

² Cash Balance Credits are applicable to 2003-2004, however, N/A for 2004-2005.

³ For FY 04 Additional prior-year adjustments for Driver's Ed. Fund provided additional resources to support State Equalization Guarantee.

HISTORY OF THE UNIT VALUE
1975-1976 ACTUAL TO 2004-2005 FINAL

School Year	Initial Unit Value	Final Unit Value	Percent Change Year to Year
1975-1976		\$703.00	
1976-1977		\$800.00	13.80%
1977-1978		\$905.00	13.13%
1978-1979		\$1,020.00	12.71%
1979-1980		\$1,145.00	12.25%
1980-1981		\$1,250.00	9.17%
1981-1982		\$1,405.00	12.40%
1982-1983 ¹	\$1,540.00	\$1,511.33	7.57%
1983-1984		\$1,486.00	-1.68%
1984-1985		\$1,583.50	6.56%
1985-1986 ²	\$1,608.00	\$1,618.87	2.23%
1986-1987		\$1,612.51	-0.39%
1987-1988		\$1,689.00	4.74%
1988-1989		\$1,737.78	2.89%
1989-1990		\$1,811.51	4.24%
1990-1991		\$1,883.74	3.99%
1991-1992		\$1,866.00	-0.94%
1992-1993 ³	\$1,851.73	\$1,867.96	0.11%
1993-1994 ³	\$1,927.27	\$1,935.99	3.64%
1994-1995 ³	\$2,015.70	\$2,029.00	4.80%
1995-1996 ³	\$2,113.00	\$2,113.00	4.14%
1996-1997 ³	\$2,125.83	\$2,149.11	1.71%
1997-1998 ³	\$2,175.00	\$2,175.00	1.20%
1998-1999 ³	\$2,322.00	\$2,344.09	7.77%
1999-2000 ⁴	\$2,460.00	\$2,460.00	4.94%
2000-2001 ⁴	\$2,632.32	\$2,647.56	7.62%
2001-2002 ⁴	\$2,868.72	\$2,871.01	8.44%
2002-2003 ⁵	\$2,896.01	\$2,889.89	0.66%
2003-2004 ⁶	\$2,977.23	\$2,976.20	2.99%
2004-2005	\$3,035.15	\$3,068.70	3.11%

¹The 1982-1983 General Fund Appropriation was reduced by 2.0 percent.

²The final unit value includes \$10.87 due to the ½ mill redistribution (Ch. 15, Laws of 1985).

³The "floating" unit value was in effect.

⁴The "floating" unit value was in effect; the basis for funding changed to prior year membership.

⁵The final unit value included a decrease of \$6.12 under the initial unit value due to statewide units included in operating budgets which were greater than the number of units used to establish initial unit value.

⁶The final unit value included a decrease of \$1.03 under the initial unit value due to 90% At Risk Save Harmless funding and additional Growth Units included in operating budgets which were greater than the amounts used to establish initial unit value.

COMPARISON OF PROGRAM COST PER MEMBERSHIP
2003-2004 ACTUAL TO 2004-2005 BUDGETED¹
RANKED ON THE BASIS OF 2004-2005 COST PER MEMBERSHIP²

District	2004-2005 Rank	2003-2004 Actual	2004-2005 Budgeted	Difference	Percent Change	District	2004-2005 Rank	2003-2004 Actual	2004-2005 Budgeted	Difference	Percent Change
ALAMOGORDO	N/A	\$5,136	\$5,324	\$188	3.66%	HONDO	8	\$9,381	\$9,353	(\$28)	-0.30%
Lacy Simms Middle	N/A	\$5,810	\$6,065	\$255	N/A	HOUSE	23	\$8,199	\$8,512	\$313	3.82%
ALAMOGORDO W/CHARTER	83	\$5,147	\$5,336	\$188	3.66%	JAL	36	\$7,161	\$7,617	\$456	6.37%
ALBUQUERQUE	N/A	\$5,574	\$5,642	\$68	1.22%	JEMEZ MOUNTAIN	17	\$8,821	\$8,744	(\$77)	-0.87%
Academia de Lengua Y Cultura	N/A	\$6,712	\$6,154	(\$558)	-8.31%	JEMEZ VALLEY	N/A	\$8,613	\$8,411	(\$202)	-2.35%
Amy Biehl	N/A	\$7,920	\$8,165	\$245	3.09%	San Diego Riverside	N/A	\$8,393	\$8,289	(\$104)	-1.24%
Cesar Chavez Comm. School	N/A	\$0	\$7,995	\$7,995	N/A	Walatowa Charter High	N/A	\$9,988	\$10,349	\$361	N/A
Charter Voc. High	N/A	\$7,008	\$5,335	(\$1,673)	-23.87%	JEMEZ VALLEY W/CHARTER	25	\$8,653	\$8,482	(\$171)	-1.97%
Charter Vo-Tech Center	N/A	\$0	\$6,781	\$6,781	N/A	LAKE ARTHUR	29	\$7,879	\$8,345	\$466	5.91%
Creative Ed. Prep. Institute #1	N/A	\$0	\$7,266	\$7,266	N/A	LAS CRUCES	N/A	\$5,536	\$5,675	\$139	2.51%
Creative Ed. Prep. Institute #2	N/A	\$0	\$7,266	\$7,266	N/A	Alma D'Arte Charter	N/A	\$0	\$7,626	\$7,626	N/A
East Mountain	N/A	\$5,038	\$5,824	\$786	15.60%	La Academia de Idiomas Y Cultura	N/A	\$0	\$5,504	\$5,504	N/A
Horizon Academy Northwest	N/A	\$4,673	\$4,755	\$82	1.75%	LAS CRUCES W/CHARTER	72	\$5,536	\$5,685	\$149	2.69%
Horizon Academy South	N/A	\$4,626	\$4,916	\$290	6.27%	LAS VEGAS CITY	N/A	\$5,794	\$6,230	\$436	7.52%
Horizon Academy West	N/A	\$4,483	\$4,637	\$154	3.44%	Bridge Academy Charter	N/A	\$9,104	\$9,994	\$890	9.77%
La Academia de Esperanza	N/A	\$9,717	\$9,062	(\$655)	-6.74%	LAS VEGAS CITY W/CHARTER	56	\$5,847	\$6,271	\$424	7.25%
Learning Community Charter Sch. (The)	N/A	\$7,544	\$7,639	\$95	1.26%	LAS VEGAS WEST	N/A	\$6,596	\$6,864	\$268	4.06%
Los Puentes	N/A	\$10,348	\$9,883	(\$465)	-4.49%	Rio Gallians Charter School	N/A	\$0	\$6,556	\$6,556	N/A
Montessori of the Rio Grande	N/A	\$0	\$5,103	\$5,103	N/A	LAS VEGAS WEST W/CHARTER	48	\$6,596	\$6,858	\$262	3.97%
Nuestros Valores	N/A	\$8,129	\$9,806	\$1,677	20.63%	LOGAN	13	\$8,358	\$8,937	\$579	6.93%
PAPA	N/A	\$6,583	\$5,929	(\$654)	-9.93%	LORDSBURG	44	\$6,953	\$7,082	\$129	1.85%
Paseo del Monte	N/A	\$6,203	\$6,258	\$55	0.89%	LOS ALAMOS	61	\$5,891	\$6,022	\$131	2.22%
Robert F. Kennedy	N/A	\$8,326	\$8,950	\$624	7.49%	LOS LUNAS	69	\$5,855	\$5,879	\$24	0.40%
SIA Tech.	N/A	\$0	\$6,356	\$6,356	N/A	LOVING	43	\$7,393	\$7,112	(\$281)	-3.80%
South Valley	N/A	\$7,019	\$8,227	\$1,208	17.21%	LOVINGTON	66	\$5,838	\$5,955	\$117	2.00%
Southwest Secondary	N/A	\$7,062	\$6,087	(\$975)	-13.81%	MAGDALENA	12	\$9,589	\$9,016	(\$573)	-5.97%
Twenty-First Century	N/A	\$5,216	\$5,498	\$282	5.41%	MAXWELL	5	\$9,541	\$9,810	\$269	2.82%
ALBUQUERQUE W/CHARTERS	73	\$5,607	\$5,679	\$72	1.29%	MELROSE	9	\$9,738	\$9,176	(\$562)	-5.77%
ANIMAS	20	\$8,191	\$8,559	\$368	4.49%	MESA VISTA	28	\$7,768	\$8,346	\$578	7.45%
ARTESIA	70	\$5,557	\$5,836	\$279	5.02%	MORA	41	\$6,926	\$7,292	\$366	5.28%
AZTEC	78	\$5,420	\$5,568	\$148	2.73%	MORIARTY	80	\$5,381	\$5,404	\$23	0.42%
BELEN	71	\$5,577	\$5,737	\$160	2.87%	MOSQUERO	2	\$12,818	\$11,103	(\$1,715)	-13.38%
BERNALILLO	49	\$6,682	\$6,818	\$136	2.04%	MOUNTAINAIR	37	\$7,349	\$7,489	\$140	1.91%
BLOOMFIELD	75	\$5,498	\$5,620	\$122	2.22%	PECOS	21	\$8,086	\$8,557	\$471	5.82%
CAPITAN	51	\$6,243	\$6,473	\$230	3.68%	PENASCO	38	\$7,312	\$7,440	\$128	1.74%
CARLSBAD	N/A	\$6,121	\$6,304	\$183	2.99%	POJOAQUE	67	\$5,506	\$5,947	\$441	8.01%
Jefferson Mont. Acad.	N/A	\$8,944	\$8,728	(\$216)	-2.42%	PORTALES	81	\$5,275	\$5,396	\$121	2.29%
CARLSBAD W/CHARTERS	53	\$6,199	\$6,383	\$184	2.96%	QUEMADO	16	\$8,167	\$8,789	\$622	7.62%
CARRIZOZO	19	\$8,385	\$8,627	\$242	2.89%	QUESTA	N/A	\$8,155	\$8,491	\$336	4.13%
CENTRAL	65	\$5,725	\$5,970	\$245	4.28%	Red River Valley	N/A	\$7,649	\$8,506	\$857	11.21%
CHAMA	15	\$8,489	\$8,930	\$441	5.19%	Roots & Wings	N/A	\$7,994	\$7,482	(\$512)	-6.41%
CIMARRON	N/A	\$8,039	\$8,179	\$140	1.74%	QUESTA W/CHARTERS	27	\$8,105	\$8,454	\$349	4.30%
Moreno Valley High	N/A	\$8,288	\$8,539	\$251	3.03%	RATON	64	\$5,758	\$5,987	\$229	3.98%
CIMMARON W/CHARTERS	30	\$8,078	\$8,234	\$156	1.94%	RESERVE	6	\$9,026	\$9,612	\$586	6.49%
CLAYTON	N/A	\$7,253	\$7,660	\$407	5.61%	RIO RANCHO	77	\$5,401	\$5,579	\$178	3.29%
Amistad	N/A	\$11,081	\$8,880	(\$2,201)	-19.86%	ROSWELL	N/A	\$5,542	\$5,574	\$32	0.58%
CLAYTON W/CHARTER	33	\$7,334	\$7,708	\$374	5.09%	Sidney Gutierrez	N/A	\$6,728	\$7,043	\$315	4.69%
CLOUDCROFT	34	\$7,628	\$7,677	\$49	0.64%	ROSWELL W/CHARTER	76	\$5,549	\$5,583	\$34	0.61%
CLOVIS	84	\$5,120	\$5,295	\$175	3.42%	ROY	4	\$9,370	\$10,236	\$866	9.24%
COBRE	39	\$7,166	\$7,432	\$266	3.71%	RUIDOSO	50	\$6,576	\$6,498	(\$78)	-1.19%
CORONA	11	\$10,557	\$9,083	(\$1,474)	-13.96%	SAN JON	24	\$8,372	\$8,484	\$112	1.33%
CUBA	40	\$6,954	\$7,320	\$366	5.26%	SANTA FE	N/A	\$5,208	\$5,300	\$92	1.77%
DEMING	85	\$5,160	\$5,283	\$123	2.38%	Academy for Tech & Classics	N/A	\$8,275	\$7,958	(\$317)	-3.83%
DES MOINES	7	\$9,212	\$9,438	\$226	2.45%	Turquoise Trail	N/A	\$7,007	\$6,274	(\$733)	-10.47%
DEXTER	62	\$6,233	\$6,019	(\$214)	-3.43%	Monte Del Sol Charter	N/A	\$4,807	\$5,069	\$262	5.44%
DORA	14	\$8,447	\$8,933	\$486	5.75%	SANTA FE W/CHARTERS	82	\$5,270	\$5,354	\$84	1.60%
DULCE	58	\$6,039	\$6,155	\$116	1.92%	SANTA ROSA	24	\$7,906	\$8,087	\$181	2.29%
ELIDA	10	\$9,170	\$9,137	(\$33)	-0.36%	SILVER CONS.	N/A	\$6,043	\$6,316	\$273	4.52%
ESPANOLA	N/A	\$5,737	\$6,019	\$282	4.92%	SOCORRO	N/A	\$5,569	\$5,593	\$24	0.44%
Espanola Military Acad.	N/A	\$0	\$7,313	\$7,313	N/A	Cottonwood Valley	N/A	\$5,921	\$6,393	\$472	7.97%
ESPANOLA W/CHARTER	89	\$5,737	\$4,925	(\$812)	-14.16%	SOCORRO W/CHARTERS	74	\$5,594	\$5,649	\$55	0.99%
ESTANCIA	47	\$6,739	\$6,902	\$163	2.42%	SPRINGER	22	\$8,969	\$8,524	(\$445)	-4.96%
EUNICE	57	\$6,071	\$6,225	\$154	2.54%	TAOS	N/A	\$5,719	\$6,030	\$311	5.44%
FARMINGTON	87	\$5,076	\$5,193	\$117	2.30%	Anansi Charter School	N/A	\$7,795	\$7,854	\$59	0.76%
FLOYD	35	\$7,805	\$7,642	(\$163)	-2.09%	Taos Municipal Charter	N/A	\$5,017	\$5,490	\$473	9.43%
FT. SUMNER	26	\$8,129	\$8,482	\$353	4.34%	TAOS W/CHARTER	60	\$5,700	\$6,027	\$327	5.74%
GADSDEN	79	\$5,391	\$5,557	\$166	3.08%	TATUM	31	\$7,806	\$8,202	\$396	5.07%
GALLUP	N/A	\$5,133	\$5,217	\$84	1.64%	TEXICO	42	\$7,472	\$7,254	(\$218)	-2.92%
Middle College High	N/A	\$9,240	\$9,320	\$80	0.87%	TRUTH OR CONSEQ.	68	\$5,844	\$5,893	\$49	0.85%
GALLUP W/CHARTERS	86	\$5,142	\$5,228	\$86	1.67%	TUCUMCARI	52	\$6,293	\$6,445	\$152	2.41%
GRADY	18	\$9,650	\$8,729	(\$921)	-9.54%	TULAROSA	46	\$6,914	\$6,909	(\$5)	-0.07%
GRANTS	63	\$5,759	\$5,991	\$232	4.03%	VAUGHN	3	\$11,700	\$10,675	(\$1,025)	-8.76%
HAGERMAN	45	\$6,698	\$7,051	\$353	5.27%	WAGON MOUND	1	\$10,980	\$11,455	\$475	4.33%
HATCH	59	\$6,003	\$6,094	\$91	1.52%	ZUNI	54	\$6,638	\$6,336	(\$302)	-4.56%
HOBBS	88	\$4,995	\$5,113	\$118	2.36%	STATEWIDE		\$5,690	\$5,810	\$119	2.09%

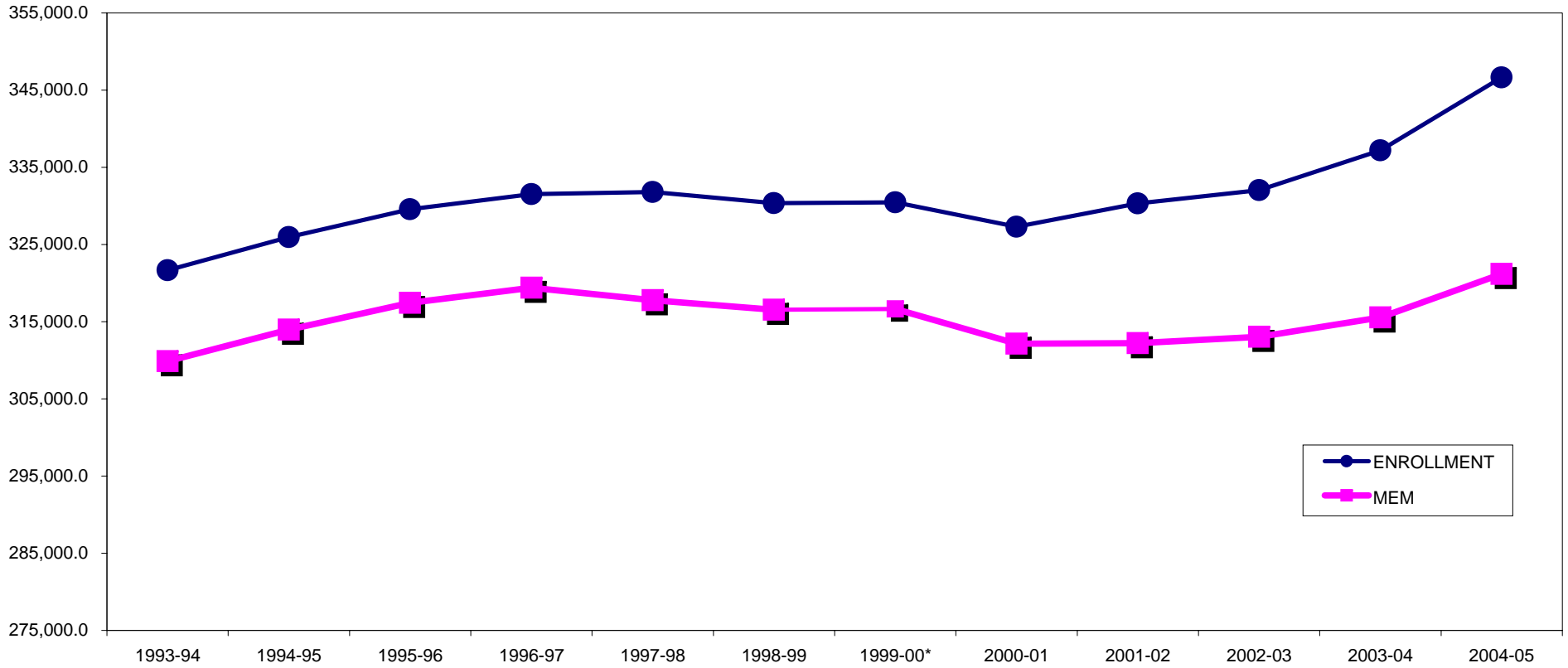
¹The average of the prior year 40th, 80th and 120th day membership was used to budget membership program units for 2004-2005, with the exception of program units for new charter school and new full-day Kindergarten programs which are budgeted based on projected 2004-2005 40th day membership. (Laws of 1999, Chapter 275, Section 1, funding based on prior year membership).

²District ranking is based on the 2004-2005 program cost per membership based on total district membership including charter schools.

RATIO OF 2004-2005 OPERATING BUDGET MEMBERSHIP TO PROGRAM UNITS

District	2004-2005 Program Units	2004-2005 Total MEM	Ratio of Units to MEM	Difference in Comparison to Statewide Avg.	District	2004-2005 Program Units	2004-2005 Total MEM	Ratio of Units to MEM	Difference in Comparison to Statewide Avg.
ALAMOGORDO	11,801.532	6,727.667	1.75	(0.16)	HONDO VALLEY	423.235	137.340	3.08	1.17
Lacy Simms Middle	210.501	105.340	2.00	0.08	HOUSE	435.605	155.330	2.80	0.89
ALAMOGORDO W/Charters	12,012.033	6,833.007	1.76	(0.16)	JAL	1,043.572	415.843	2.51	0.60
ALBUQUERQUE	158,742.626	85,401.000	1.86	(0.06)	JEMEZ MOUNTAIN	1,062.071	368.677	2.88	0.97
Academia de Lengua Y Cultura	191.599	94.500	2.03	0.11	JEMEZ VALLEY	1,072.406	386.987	2.77	0.86
Amy Biehl	514.706	191.330	2.69	0.78	San Diego Riverside	253.057	92.657	2.73	0.82
Cesar Chavez Comm. School	263.400	100.000	2.63	0.72	Walatowa Charter High	82.959	24.330	3.41	1.50
Charter Voc. High	1,062.307	604.330	1.76	(0.16)	JEMEZ VALLEY W/CHARTER	1,408.422	503.974	2.79	0.88
Charter Vo-Tech Center	446.800	200.000	2.79	0.88	LAKE ARTHUR	485.255	176.490	2.75	0.84
Creative Ed. Prep Institute #1	383.000	160.000	2.39	0.48	LAS CRUCES	42,575.292	22,770.007	1.87	(0.04)
Creative Ed. Prep Institute #2	383.000	160.000	2.39	0.48	Alma D'Arte Charter	314.063	125.000	2.51	0.60
East Mountain	627.436	327.010	1.92	0.00	La Academia de Idiomas Y Cultura	190.424	105.000	1.81	(0.10)
Horizon academy Northwest	873.684	557.650	1.57	(0.35)	LAS CRUCES CITY W/CHARTER	43,079.779	23,000.007	1.87	(0.04)
Horizon Academy South	894.599	552.330	1.62	(0.29)	LAS VEGAS CITY	4,420.120	2,153.500	2.05	0.14
Horizon Academy West	1,156.037	756.660	1.53	(0.39)	Bridge Academy	77.943	23.670	3.29	1.38
La Academia de Esperanza	565.315	189.340	2.99	1.07	LAS VEGAS CITY W/CHARTER	4,498.063	2,177.170	2.07	0.15
Learning (The) Comm. Ctr.	406.869	161.660	2.52	0.60	LAS VEGAS WEST	4,533.673	2,004.674	2.26	0.35
Los Puentes	372.288	114.330	3.26	1.34	Rio Gallians Charter School	90.717	42.000	2.16	0.25
Montessori Of The Rio Grande	260.591	155.000	1.68	(0.23)	LAS VEGAS W. W/CHARTER	4,624.390	2,046.674	2.26	0.35
Nuestros Valores	497.554	154.000	3.23	1.32	LOGAN	637.967	216.670	7.78	5.87
PAPA	608.488	311.500	1.95	0.04	LORDSBURG	1,685.536	722.340	9.88	7.86
Paseo del Monte	163.577	79.340	2.06	0.15	LOS ALAMOS	7,134.340	3,595.842	4.54	2.63
Robert F. Kennedy	613.314	208.000	2.95	1.03	LOS LUNAS	16,324.482	8,427.673	0.16	(1.75)
SIA Tech.	492.090	235.000	2.09	0.18	LOVING	1,358.263	579.683	9.48	7.56
South Valley	567.394	209.330	2.71	0.80	LOVINGTON	5,492.070	2,799.840	0.41	(1.50)
Southwest Secondary	613.698	306.000	2.01	0.09	MAGDALENA	1,158.034	389.820	0.95	(0.97)
Twenty-First Century	359.564	198.500	1.81	(0.10)	MAXWELL	369.547	114.330	6.31	4.40
ALBUQUERQUE W/CHARTERS	171,060.016	91,426.810	1.87	(0.04)	MELROSE	721.618	238.680	5.78	3.87
ANIMAS	873.314	309.675	2.82	0.91	MESA VISTA	1,380.349	501.998	3.08	1.16
ARTESIA	6,750.898	3,511.156	1.92	0.01	MORA	1,545.140	643.173	11.53	9.62
AZTEC	5,844.374	3,185.837	1.83	(0.08)	MORIARTY	7,417.664	4,165.832	0.05	(1.86)
BELEN	9,080.330	4,804.177	1.89	(0.02)	MOSQUERO	207.229	56.650	15.77	13.85
BERNALILLO	7,452.202	3,317.500	2.25	0.33	MOUNTAINAIR	893.188	362.006	6.67	4.75
BLOOMFIELD	5,757.246	3,109.143	1.85	(0.06)	PECOS	2,413.393	855.997	1.75	(0.16)
CAPITAN	1,280.567	600.490	2.13	0.22	PEÑASCO	1,500.953	612.320	6.08	4.17
CARLSBAD	12,358.958	5,960.154	2.08	0.16	POJOAQUE	3,725.737	1,901.340	2.62	0.71
Jefferson Montessori	571.304	198.672	2.88	0.96	PORTALES	4,989.045	2,806.340	0.48	(1.43)
CARLSBAD W/CHARTERS	12,930.262	6,148.825	2.10	0.19	QUEMADO	497.562	171.835	1.03	(0.88)
CARRIZOZO	611.608	215.167	2.84	0.93	QUESTA	1,353.457	483.826	0.37	(1.55)
CENTRAL	13,553.107	6,890.012	1.97	0.05	Red River Valley	177.047	63.173	0.85	(1.07)
CHAMA VALLEY	1,425.574	484.507	2.94	1.03	Roots & Wings	53.416	21.670	73.09	71.18
CIMARRON	1,263.837	469.022	2.69	0.78	QUESTA W/CHARTERS	1,583.920	568.670	2.79	0.87
Moreno Valley	240.061	85.330	2.81	0.90	RATON	2,737.857	1,387.997	1.97	0.06
CIMARRON W/CHARTERS	1,503.898	554.352	2.71	0.80	RESERVE	616.483	194.668	3.17	1.25
CLAYTON	1,423.007	563.830	2.52	0.61	RIO RANCHO	21,585.843	11,743.335	1.84	(0.08)
Amistad	66.815	22.837	2.93	1.01	ROSWELL	16,859.335	9,180.846	1.84	(0.08)
CLAYTON W/CHARTER	1,489.822	586.667	2.54	0.63	Sidney Gutierrez	136.916	59.000	2.32	0.41
CLOUDCROFT	1,112.561	439.837	2.53	0.62	ROSWELL W/CHARTER	16,996.251	9,239.846	1.84	(0.07)
CLOVIS	14,153.114	8,113.003	1.74	(0.17)	ROY	309.181	91.677	3.37	1.46
COBRE	3,728.104	1,522.510	2.45	0.53	RUIDOSO	5,002.792	2,336.820	2.14	0.23
CORONA	292.287	97.666	2.99	1.08	SAN JON	477.987	171.000	2.80	0.88
CUBA	1,900.914	788.193	2.41	0.50	SANTA FE	22,029.480	12,615.174	1.75	(0.17)
DEMING	9,380.137	5,389.486	1.74	(0.17)	Academy for Tech & Classics	474.597	181.000	2.62	0.71
DES MOINES	444.162	142.833	3.11	1.20	Turquoise Trail	756.524	366.010	2.07	0.15
DEXTER	2,176.336	1,097.493	1.98	0.07	Monte Del Sol Charter	718.742	430.333	1.67	(0.24)
DORA	659.836	224.182	2.94	1.03	SANTA FE W/CHARTERS	23,979.343	13,592.517	1.76	(0.15)
DULCE	1,352.168	666.830	2.03	0.11	SANTA ROSA	1,877.230	704.524	2.66	0.75
ELIDA	364.751	121.163	3.01	1.10	SILVER CITY	6,719.957	3,229.504	2.08	0.17
ESPAÑOLA	9,584.029	4,833.157	1.98	0.07	SOCORRO	3,515.968	1,907.995	1.84	(0.07)
Espanola Military Acad.	361.393	150.000	2.41	0.50	Cottonwood Valley	301.916	143.340	2.11	0.19
ESPAÑOLA W/CHARTER	9,945.422	4,983.157	2.00	0.08	SOCORRO W/CHARTERS	3,817.884	2,051.335	1.86	(0.05)
ESTANCIA	2,010.599	884.167	2.27	0.36	SPRINGER	635.618	226.328	2.81	0.89
EUNICE	1,196.089	583.166	2.05	0.14	TAOS	6,011.737	3,025.850	1.99	0.07
FARMINGTON	16,910.591	9,884.163	1.71	(0.20)	Anansi Charter School	128.502	49.660	2.59	0.67
FLOYD	691.598	274.663	2.52	0.60	Taos Municipal Charter	341.244	188.670	1.81	(0.11)
FT. SUMNER	889.157	318.170	2.79	0.88	TAOS W/CHARTER	6,481.483	3,264.180	1.99	0.07
GADSDEN	24,871.769	13,584.007	1.83	(0.08)	TATUM	789.566	292.170	2.70	0.79
GALLUP	22,995.176	13,377.493	1.72	(0.20)	TEXICO	1,265.495	529.502	2.39	0.48
Middle College High	104.408	34.000	3.07	1.16	TRUTH OR CONS.	3,087.147	1,590.010	1.94	0.03
GALLUP W/CHARTER	23,099.584	13,411.493	1.72	(0.19)	TUCUMCARI	2,372.571	1,117.316	2.12	0.21
GRADY	366.242	127.350	2.88	0.96	TULAROSA	2,299.572	1,010.170	2.28	0.36
GRANTS	7,212.151	3,653.673	1.97	0.06	VAUGHN	331.177	94.163	3.52	1.60
HAGERMAN	1,062.815	457.503	2.32	0.41	WAGON MOUND	650.350	172.324	3.77	1.86
HATCH	3,055.058	1,521.490	2.01	0.09	ZUNI	3,584.894	1,717.326	2.09	0.17
HOBBS	12,546.688	7,447.330	1.68	(0.23)	STATEWIDE	614,763.294	321,180.109	1.91	

STUDENT MEMBERSHIP & ENROLLMENT
 1993-1994 ACTUAL TO 2004-2005 BUDGETED



*NOTE: Because of the funding formula revisions, which went into effect on July 1, 1999 (Laws of 1999, Chapter 275, Section 1), membership for 1998-1999 was used to determine 1999-2000 funding and the average of the prior year's 40th, 80th, and 120th day membership was used to determine funding beginning in 2000-2001, and the average of the prior year's 40th, 80th, and 120th day membership was used to determine funding beginning 2000-2001 and fiscal years thereafter.

Sources: "Public School Pupil Membership Funded Reports," 1993-1994 to 2003-2004; 2004-2005 operating budgets.

**GROWTH IN SPECIAL EDUCATION
1987-1988 ACTUAL TO 2004-2005 BUDGETED**

Year	A/B Programs	A/B Membership	Ancillary Programs	C, D, DNPTC Membership	3 & 4 Yr. Dev. Delayed	Program Dollars Generated	Percent of Program Cost
1987-88	919.20		470.07	14,367	827	\$111,784,462	15.1%
1988-89	946.86		485.56	15,176	1,155	\$122,824,031	15.7%
1989-90	983.39		519.03	16,290	1,255	\$136,439,854	16.4%
1990-91	1,051.97		557.05	17,376	1,406	\$152,505,707	16.4%
1991-92	1,121.61		646.47	18,066	1,598	\$161,855,347	17.2%
1992-93	1,183.30		671.31	19,064	2,056	\$173,545,813	17.9%
1993-94	1,229.47		718.04	19,939	2,433	\$191,330,407	18.5%
1994-95	1,272.24		837.72	21,284	2,860	\$218,831,708	19.5%
1995-96 ²	1,308.83		1,043.02	22,474	3,309	\$249,487,615	21.0%
1996-97	1,330.44		1,124.06	23,610	3,488	\$267,968,658	21.9%
1997-98 ³		32,425	1,548.18	24,412	3,680	\$229,127,550	17.8%
1998-99		33,561	1,706.28	25,361	3,825	\$262,774,130	18.8%
1999-00 ⁴		33,564	1,706.38	25,362	3,825	\$275,783,958	18.8%
2000-01 ⁴		34,103	1,765.73	25,159	3,488	\$299,082,134	19.2%
2001-02 ⁴		35,054	1,780.09	25,053	3,564	\$326,390,574	19.2%
2002-2003 ⁴		35,433	1,772.72	24,980	3,779	\$329,829,212	19.2%
2003-2004 ⁴		35,896	1,773.07	24,180	3,747	\$336,208,894	18.7%
2004-2005 Operating Budgets ⁴		36,229	1,764.84	23,451	4,003	\$340,295,916	18.2%
15-Year Increase (1988-89 to 2003-04)			265.16%	59.33%	224.45%	173.73%	
10-Year Increase (1993-94 to 2003-04)			146.93%	21.27%	54.02%	75.72%	
5-Year Increase (1998-99 to 2003-04)			3.91%	-4.66%	-2.03%	27.95%	

¹Four-year-old Developmentally Delayed children were funded by a transfer from Reserve Fund in the amount of \$2,140,920 which is not reflected here in Program Dollars Generated or Percent of Program Cost.

²Ancillary FTE includes ancillary evaluative services FTE.

³Beginning with the 1997-98 school year, funding for A- and B-level special education services will be determined on the basis of membership rather than program FTE. Prior to 1997-98, students receiving C and D level special education services were counted apart from the grade level counts. Beginning in 1997-98, all students are counted at grade level (Laws of 1997, Chapter 40).

⁴Because of the funding formula revisions, which went into effect on July 1, 1999 (Laws of 1999, Chapter 275, Section 1), membership for 1998-1999 was used to determine the funding for 1999-2000 and the average of the prior year's 40th, 80th and 120th day membership was used to determine funding beginning in 2000-2001, and the average of the prior year's 40th, 80th, and 120th day membership was used to determine funding beginning 2000-2001 and fiscal years thereafter.