

2001-2002 STATE MEMBERSHIP

District	2001-2002 Operating Budget Membership ¹	2001-2002 40th Day Membership ²	2001-2002 Final Funded Membership ¹	Difference Operating Budget Versus 40-Day Mem	Percent Difference	Difference 40-Day Mem Versus Funded Mem	Percent Change	Difference Operating Budget Versus Funded Mem	Percent Change
ALAMOGORDO	7,050.50	6,908.0	7,052.6	142.5	2.02%	(144.6)	-2.09%	(2.2)	-0.03%
ALBUQUERQUE ³	83,380.7	85,146.5	83,805.7	(1,765.9)	-2.12%	1,340.9	1.57%	(425.0)	-0.51%
ANIMAS	332.6	308.0	332.6	24.6	7.41%	(24.6)	-8.00%	0.0	0.00%
ARTESIA	3,594.5	3,446.0	3,594.5	148.5	4.13%	(148.5)	-4.31%	0.0	0.00%
AZTEC	3,182.0	3,254.5	3,182.0	(72.5)	-2.28%	72.5	2.23%	0.0	0.00%
BELEN	4,613.3	4,725.0	4,646.8	(111.7)	-2.42%	78.2	1.65%	(33.5)	-0.73%
BERNALILLO	3,315.8	3,417.0	3,400.3	(101.2)	-3.05%	16.7	0.49%	(84.5)	-2.55%
BLOOMFIELD	3,077.7	3,054.5	3,077.7	23.2	0.75%	(23.2)	-0.76%	0.0	0.00%
CAPITAN	590.0	545.0	590.0	45.0	7.63%	(45.0)	-8.26%	0.0	0.00%
CARLSBAD	5,983.8	6,132.5	6,181.3	(148.7)	-2.48%	(48.8)	-0.80%	(197.5)	-3.30%
CARRIZOZO	228.5	218.0	228.5	10.5	4.60%	(10.5)	-4.82%	0.0	0.00%
CENTRAL CONS.	7,177.5	7,197.0	7,177.5	(19.5)	-0.27%	19.5	0.27%	0.0	0.00%
CHAMA VALLEY	546.5	527.5	554.0	19.0	3.48%	(26.5)	-5.02%	(7.5)	-1.37%
CIMARRON	608.2	537.5	608.2	70.7	11.62%	(70.7)	-13.15%	0.0	0.00%
CLAYTON ³	652.7	662.0	675.7	(9.3)	-1.43%	(13.7)	-2.06%	(23.0)	-3.52%
CLOUDCROFT	504.51	470.5	504.5	34.0	6.74%	(34.0)	-7.23%	0.0	0.00%
CLOVIS	7,918.33	7,944.5	8,057.8	(26.2)	-0.33%	(113.3)	-1.43%	(139.5)	-1.76%
COBRE CONS.	1,746.34	1,774.5	1,808.8	(28.2)	-1.61%	(34.3)	-1.94%	(62.5)	-3.58%
CORONA	78.50	77.0	77.0	1.5	1.91%	0.0	0.00%	1.5	1.91%
CUBA	760.33	784.5	760.3	(24.2)	-3.18%	24.2	3.08%	0.0	0.00%
DEMING	5,187.02	5,274.5	5,228.0	(87.5)	-1.69%	46.5	0.88%	(41.0)	-0.79%
DES MOINES	143.50	139.5	139.5	4.0	2.79%	0.0	0.00%	4.0	2.79%
DEXTER	1,103.50	1,071.0	1,103.5	32.5	2.95%	(32.5)	-3.03%	0.0	0.00%
DORA	238.84	226.5	238.8	12.3	5.17%	(12.3)	-5.45%	0.0	0.00%
DULCE	696.67	725.5	696.7	(28.8)	-4.14%	28.8	3.97%	0.0	0.00%
ELIDA	110.00	110.0	105.0	0.0	0.00%	5.0	4.55%	5.0	4.55%
ESPAÑOLA	4,791.34	4,932.5	4,874.8	(141.2)	-2.95%	57.7	1.17%	(83.5)	-1.74%
ESTANCIA	906.84	896.5	906.8	10.3	1.14%	(10.3)	-1.15%	0.0	0.00%
EUNICE	621.33	595.0	621.3	26.3	4.24%	(26.3)	-4.43%	0.0	0.00%
FARMINGTON	9,771.16	9,995.5	9,945.7	(224.3)	-2.30%	49.8	0.50%	(174.5)	-1.79%
FLOYD	240.50	267.0	240.5	(26.5)	-11.02%	26.5	9.93%	0.0	0.00%
FT. SUMNER	365.50	348.5	365.5	17.0	4.65%	(17.0)	-4.88%	0.0	0.00%
GADSDEN	12,465.49	12,954.5	12,732.5	(489.0)	-3.92%	222.0	1.71%	(267.0)	-2.14%
GALLUP-McKINLEY	13,733.33	13,661.0	13,816.8	72.3	0.53%	(155.8)	-1.14%	(83.5)	-0.61%
GRADY	113.50	102.0	102.0	11.5	10.13%	0.0	0.00%	11.5	10.13%
GRANTS	3,535.67	3,637.5	3,555.7	(101.8)	-2.88%	81.8	2.25%	(20.0)	-0.57%
HAGERMAN	494.17	502.5	494.2	(8.3)	-1.69%	8.3	1.66%	0.0	0.00%
HATCH	1,479.66	1,494.0	1,479.7	(14.3)	-0.97%	14.3	0.96%	0.0	0.00%
HOBBS	7,291.68	7,371.0	7,291.7	(79.3)	-1.09%	79.3	1.08%	0.0	0.00%
HONDO	139.00	127.5	127.5	11.5	8.27%	0.0	0.00%	11.5	8.27%
HOUSE	178.00	154.5	154.5	23.5	13.20%	0.0	0.00%	23.5	13.20%
JAL	445.67	415.0	445.7	30.7	6.88%	(30.7)	-7.39%	0.0	0.00%
JEMEZ MOUNTAIN	349.16	355.0	350.7	(5.8)	-1.67%	4.3	1.22%	(1.5)	-0.43%
JEMEZ VALLEY ³	570.7	536.5	584.7	34.2	5.99%	(48.2)	-8.98%	(14.0)	-2.45%
LAKE ARTHUR	204.8	204.5	214.3	0.3	0.16%	(9.8)	-4.80%	(9.5)	-4.64%
LAS CRUCES	21,317.2	21,881.0	21,568.2	(563.8)	-2.64%	312.8	1.43%	(251.0)	-1.18%

2001-2002 STATE MEMBERSHIP

District	2001-2002 Operating Budget Membership ¹	2001-2002 40th Day Membership ²	2001-2002 Final Funded Membership ¹	Difference Operating Budget Versus 40-Day Mem	Percent Difference	Difference 40-Day Mem Versus Funded Mem	Percent Change	Difference Operating Budget Versus Funded Mem	Percent Change
LAS VEGAS CITY	2,387.8	2,329.5	2,392.3	58.3	2.44%	(62.8)	-2.70%	(4.5)	-0.19%
LAS VEGAS WEST	2,005.7	2,072.0	2,086.2	(66.3)	-3.31%	(14.2)	-0.68%	(80.5)	-4.01%
LOGAN	257.8	263.5	257.8	(5.7)	-2.20%	5.7	2.15%	0.0	0.00%
LORDSBURG	800.8	796.0	832.3	4.8	0.60%	(36.3)	-4.56%	(31.5)	-3.93%
LOS ALAMOS	3,474.8	3,443.5	3,474.8	31.3	0.90%	(31.3)	-0.91%	0.0	0.00%
LOS LUNAS	8,192.0	8,324.5	8,247.0	(132.5)	-1.62%	77.5	0.93%	(55.0)	-0.67%
LOVING	576.7	562.5	576.7	14.2	2.46%	(14.2)	-2.52%	0.0	0.00%
LOVINGTON	2,707.0	2,656.0	2,707.0	51.0	1.88%	(51.0)	-1.92%	0.0	0.00%
MAGDALENA	336.3	341.5	336.3	(5.2)	-1.54%	5.2	1.51%	0.0	0.00%
MAXWELL	134.5	135.5	134.5	(1.0)	-0.74%	1.0	0.74%	0.0	0.00%
MELROSE	264.0	235.0	264.0	29.0	10.98%	(29.0)	-12.33%	0.0	0.00%
MESA VISTA	556.3	518.5	556.3	37.8	6.80%	(37.8)	-7.30%	0.0	0.00%
MORA	642.3	688.5	642.3	(46.2)	-7.19%	46.2	6.71%	0.0	0.00%
MORIARTY	4,398.7	4,262.5	4,431.7	136.2	3.10%	(169.2)	-3.97%	(33.0)	-0.75%
MOSQUERO	53.0	55.5	55.5	(2.5)	-4.72%	0.0	0.00%	(2.5)	-4.72%
MOUNTAINAIR	377.1	362.0	377.1	15.1	4.02%	(15.1)	-4.19%	0.0	0.00%
PECOS	869.5	811.0	869.5	58.5	6.73%	(58.5)	-7.21%	0.0	0.00%
PEÑASCO	634.8	628.0	634.8	6.8	1.07%	(6.8)	-1.09%	0.0	0.00%
POJOAQUE	1,916.2	1,859.0	1,916.2	57.2	2.98%	(57.2)	-3.07%	0.0	0.00%
PORTALES	2,649.3	2,760.0	2,757.8	(110.7)	-4.18%	2.2	0.08%	(108.5)	-4.10%
QUEMADO	189.5	172.0	172.0	17.5	9.23%	0.0	0.00%	17.5	9.23%
QUESTA	626.2	603.5	639.7	22.7	3.62%	(36.2)	-5.99%	(13.5)	-2.16%
RATON	1,367.2	1,493.5	1,430.7	(126.3)	-9.24%	62.8	4.21%	(63.5)	-4.64%
RESERVE	243.7	234.5	243.7	9.2	3.76%	(9.2)	-3.90%	0.0	0.00%
RIO RANCHO	9,824.8	10,194.0	9,824.8	(369.2)	-3.76%	369.2	3.62%	0.0	0.00%
ROSWELL	9,462.2	9,369.0	9,595.2	93.2	0.98%	(226.2)	-2.41%	(133.0)	-1.41%
ROY	99.5	107.0	108.0	(7.5)	-7.54%	(1.0)	-0.93%	(8.5)	-8.54%
RUIDOSO	2,478.0	2,419.0	2,478.0	59.0	2.38%	(59.0)	-2.44%	0.0	0.00%
SAN JON	185.0	158.5	160.0	26.5	14.32%	(1.5)	-0.95%	25.0	13.51%
SANTA FE ³	12,951.5	13,130.5	13,136.5	(179.0)	-1.38%	(6.0)	-0.05%	(185.0)	-1.43%
SANTA ROSA	798.8	777.5	817.3	21.3	2.67%	(39.8)	-5.12%	(18.5)	-2.32%
SILVER CITY CONS.	3,497.0	3,396.5	3,521.5	100.5	2.87%	(125.0)	-3.68%	(24.5)	-0.70%
SOCORRO	2,208.5	2,057.5	2,228.5	151.0	6.84%	(171.0)	-8.31%	(20.0)	-0.91%
SPRINGER	266.8	250.0	266.8	16.8	6.31%	(16.8)	-6.73%	0.0	0.00%
TAOS ³	3,295.51	3,323.5	3,399.2	(28.0)	-0.85%	(75.7)	-2.28%	(103.7)	-3.15%
TATUM	333.67	319.0	333.7	14.7	4.40%	(14.7)	-4.60%	0.0	0.00%
TEXICO	514.00	502.0	514.0	12.0	2.34%	(12.0)	-2.39%	0.0	0.00%
TRUTH OR CONSEQ.	1,635.17	1,633.5	1,682.2	1.7	0.10%	(48.7)	-2.98%	(47.0)	-2.87%
TUCUMCARI	1,254.50	1,229.5	1,296.0	25.0	1.99%	(66.5)	-5.41%	(41.5)	-3.31%
TULAROSA	1,102.18	1,090.0	1,102.2	12.2	1.10%	(12.2)	-1.12%	0.0	0.00%
VAUGHN	86.16	92.0	94.0	(5.8)	-6.78%	(2.0)	-2.17%	(7.8)	-9.10%
WAGON MOUND	162.50	175.5	175.5	(13.0)	-8.00%	0.0	0.00%	(13.0)	-8.00%
ZUNI	1,739.00	1,742.5	1,739.0	(3.5)	-0.20%	3.5	0.20%	0.0	0.00%
STATEWIDE	309,392.6	312,683.5	312,208.8	(3,290.9)	-1.06%	474.7	0.15%	(2,816.2)	-0.91%

NOTE: State membership includes grades 1-12, special education C, D, 3 and 4 year old, D-nonprofit (private special education), and early childhood education FTE.

¹Because of the funding formula revisions, which went into effect on July 1, 1999 (Laws of 1999, Chapter 275, Section 1), membership for 2000-2001 was used to determine funding for 2001-2002.

²The 2001-2002, 40th day membership is shown here for comparison purposes only.

³ The membership for these districts includes Charter Schools.

MEMBERSHIP, PROGRAM UNITS, PROGRAM DOLLARS
2001-2002, 2002-2003

	STUDENT MEMBERSHIP ¹			PROGRAM UNITS			PROGRAM DOLLARS		
	2001-2002	2002-2003		2001-2002	2002-2003		2001-2002	2002-2003	2002-2003
	Actual	Appropriated Membership	2002-2003 Budgeted	Actual	Appropriated Units	2002-2003 Budgeted	\$2,871.01 Per Unit	Appropriated \$2,896.01	Budgeted at \$2,896.01
ECE FTE	18,128.15	18,899.17	18,947.06	26,104.545	27,214.800	27,283.758	\$74,946,410	\$78,814,333	\$79,014,036
Grades 1-12	294,080.62	292,436.16	294,348.16	347,289.075	345,300.170	347,628.074	997,070,407	999,992,745	1,006,734,379
Special Education:									
A/B Membership	35,054.33	35,342.30	35,342.30	24,538.031	24,739.610	24,739.610	70,448,932	71,646,158	71,646,158
Class C	12,590.65	12,431.97	12,431.98	12,590.650	12,431.970	12,431.980	36,147,882	36,003,109	36,003,138
Class D	12,462.69	12,387.70	12,470.68	24,925.380	24,775.400	24,941.360	71,561,015	71,749,806	72,230,428
3 & 4-yr. Develop. Delayed	3,564.31	3,776.07	3,776.07	7,128.620	7,552.140	7,552.134	20,466,339	21,871,073	21,871,056
Related Services FTE	1,780.09	1,646.48	1,766.82	44,502.250	41,162.000	44,170.475	127,766,405	119,205,564	127,918,137
Bilingual FTE	26,336.97	25,599.70	25,696.32	13,168.485	12,799.850	12,848.160	37,806,852	37,068,494	37,208,400
Training & Experience				45,674.950	45,528.817	46,043.504	131,133,238	131,851,910	133,342,448
Size Adjustment				19,870.807	19,950.438	20,279.175	57,049,286	57,776,668	58,728,694
Enrollment Growth				1,415.164	1,561.060	1,544.557	4,062,950	4,520,845	4,473,053
At-Risk				23,880.500	23,030.577	23,172.294	68,561,154	66,696,781	67,107,195
Plus Save Harmless				328.243	300.000	0.000	942,389	868,803	0
Plus Even Start & Native American Preschool							2,000,000		
Plus At-Risk Save Harmless								1,878,620	1,902,628
Less Operating Budget Adjustment ²									(7,889,802)
Total Membership¹/Units/Dollars	312,208.78	311,335.33	313,295.22	591,416.700	586,346.832	592,635.081	\$1,699,963,260	\$1,699,944,908	\$1,710,289,947
Plus 2002-2003 SDE Estimated Start-up Charter Schools/New Programs					5,166.174			14,961,292	0
TOTAL UNITS/PROGRAM COST				591,416.700	591,513.006	592,635.081	\$1,699,963,260	\$1,714,906,200	\$1,710,289,947
Less Credits:									
Impact Aid (P.L. 874)							(\$48,844,943)	(\$50,750,000)	(\$46,128,246)
Forest Reserve							(661,877)	(306,000)	(690,655)
Local Tax							(7,597,889)	(6,427,500)	(7,956,903)
TOTAL Credits							(\$57,104,709)	(\$57,483,500)	(\$54,775,804)
CALC. STATE EQUALIZATION GUARANTEE							\$1,642,858,551	\$1,657,422,700	\$1,655,514,144
Less Guaranteed Energy Savings							(\$3,366,476)		(\$3,377,295)
DISTRIBUTED STATE EQUALIZATION GUARANTEE							\$1,639,492,075		\$1,652,136,848
CALC. STATE EQUALIZATION GUARANTEE							\$1,642,858,551	\$1,657,422,700	\$1,655,514,144
Plus Excess Credits							3,622,749		
APPROPRIATED STATE EQUALIZATION GUARANTEE							\$1,646,481,300	\$1,657,422,700	

¹Beginning with the 2000-2001 school year, student membership is based on an average of the 40-, 80-, and 120-day enrollment counts.

²Because the total number of units statewide included in districts' operating budgets is greater than the number used to establish initial unit value, the State Equalization Guarantee monthly distribution has been reduced until the 40th day membership reports are submitted and validated and the exact number of units to be funded can be determined.

HISTORY OF THE UNIT VALUE
1974-1975 ACTUAL TO 2002-2003 FINAL

School Year	Initial Unit Value	Final Unit Value	Percent Change Year to Year
1974-1975		\$616.50	
1975-1976		\$703.00	14.03%
1976-1977		\$800.00	13.80%
1977-1978		\$905.00	13.13%
1978-1979		\$1,020.00	12.71%
1979-1980		\$1,145.00	12.25%
1980-1981		\$1,250.00	9.17%
1981-1982		\$1,405.00	12.40%
1982-1983 ¹	\$1,540.00	\$1,511.33	7.57%
1983-1984		\$1,486.00	-1.68%
1984-1985		\$1,583.50	6.56%
1985-1986 ²	\$1,608.00	\$1,618.87	2.23%
1986-1987		\$1,612.51	-0.39%
1987-1988		\$1,689.00	4.74%
1988-1989		\$1,737.78	2.89%
1989-1990		\$1,811.51	4.24%
1990-1991		\$1,883.74	3.99%
1991-1992		\$1,866.00	-0.94%
1992-1993 ³	\$1,851.73	\$1,867.96	0.11%
1993-1994 ³	\$1,927.27	\$1,935.99	3.64%
1994-1995 ³	\$2,015.70	\$2,029.00	4.80%
1995-1996 ³	\$2,113.00	\$2,113.00	4.14%
1996-1997 ³	\$2,125.83	\$2,149.11	1.71%
1997-1998 ³	\$2,175.00	\$2,175.00	1.20%
1998-1999 ³	\$2,322.00	\$2,344.09	7.77%
1999-2000 ⁴	\$2,460.00	\$2,460.00	4.94%
2000-2001 ⁴	\$2,632.32	\$2,647.56	7.62%
2001-2002 ⁴	\$2,868.72	\$2,871.01	8.44%
2002-2003 ⁵	\$2,896.01	\$2,889.89	0.66%

¹The 1982-1983 General Fund Appropriation was reduced by 2.0 percent.

²The final unit value includes \$10.87 due to the ½ mill redistribution (Ch. 15, Laws of 1985).

³The "floating" unit value was in effect.

⁴The "floating" unit value was in effect; the basis for funding changed to prior year membership.

⁵The final unit value included a decrease of \$6.12 over the initial unit value due to statewide units included in Operating budgets were greater than the number of units used to establish initial unit value.

1984 through 1998-1999; *New Mexico Public School Finance Statistics*, 2001-2002; analysis of appropriated program cost for 2002-2003.

Revised 02/03

COMPARISON OF PROGRAM COST PER MEMBERSHIP
2001-2002 ACTUAL TO 2002-2003 BUDGETED¹
RANKED ON THE BASIS OF 2002-2003 COST PER MEMBERSHIP²

District	2002-2003 Rank	2001-2002 Actual	2002-2003 Budgeted	Difference	Percent Change	District	2002-2003 Rank	2001-2002 Actual	2002-2003 Budgeted	Difference	Percent Change
ALAMOGORDO	85	\$4,587	\$4,983	\$396	8.63%	LAS CRUCES	72	\$5,418	\$5,403	(\$15)	-0.28%
ALBUQUERQUE	N/A	\$5,378	\$5,302	(\$76)	-1.41%	LAS VEGAS CITY	67	\$5,577	\$5,542	(\$35)	-0.63%
Amy Biehl Charter High	N/A	\$8,443	\$7,616	(\$827)	-9.80%	LAS VEGAS WEST	48	\$5,984	\$6,469	\$485	8.10%
East Mountain Charter High	N/A	\$6,921	\$5,674	(\$1,247)	-18.02%	LOGAN	20	\$7,950	\$7,856	(\$94)	-1.18%
South Valley Charter	N/A	\$8,787	\$7,441	(\$1,346)	-15.32%	LORDSBURG	41	\$6,783	\$6,779	(\$4)	-0.06%
The SW Learning Center	N/A	\$7,278	\$6,944	(\$334)	-4.59%	LOS ALAMOS	60	\$5,608	\$5,699	\$91	1.62%
Robert F. Kennedy	N/A	\$7,253	\$7,396	\$143	1.97%	LOS LUNAS	64	\$5,646	\$5,648	\$2	0.04%
Pub. Acad. For Perform Arts	N/A	\$7,062	\$6,599	(\$463)	-6.56%	LOVING	46	\$6,952	\$6,634	(\$318)	-4.57%
Learning Com Ctr. School	N/A	\$7,329	\$7,202	(\$127)	-1.73%	LOVINGTON	61	\$5,604	\$5,691	\$87	1.55%
Nuestros Valores	N/A	\$10,326	\$9,759	(\$567)	-5.49%	MAGDALENA	7	\$8,292	\$8,779	\$487	5.87%
21st Century Charter	N/A	\$5,524	\$5,193	(\$331)	-5.99%	MAXWELL	6	\$9,784	\$8,822	(\$962)	-9.83%
ALBUQUERQUE W/CHARTERS	75	\$5,413	\$5,327	(\$86)	-1.59%	MELROSE	9	\$7,683	\$8,554	\$871	11.34%
ANIMAS	24	\$7,417	\$7,743	\$326	4.40%	MESA VISTA	18	\$7,599	\$8,094	\$495	6.51%
ARTESIA	73	\$5,160	\$5,390	\$230	4.46%	MORA	42	\$6,928	\$6,777	(\$151)	-2.18%
AZTEC	77	\$5,106	\$5,287	\$181	3.54%	MORIARTY	76	\$5,135	\$5,295	\$160	3.12%
BELÉN	71	\$5,265	\$5,435	\$170	3.23%	MOSQUERO	1	\$12,007	\$11,926	(\$81)	-0.67%
BERNALILLO	47	\$6,433	\$6,597	\$164	2.55%	MOUNTAINAIR	33	\$7,054	\$7,362	\$308	4.37%
BLOOMFIELD	81	\$5,202	\$5,189	(\$13)	-0.25%	PECOS	27	\$7,223	\$7,633	\$410	5.68%
CAPITAN	52	\$5,979	\$6,115	\$136	2.27%	PENASCO	34	\$7,212	\$7,211	(\$1)	-0.01%
CARLSBAD	55	\$5,681	\$5,932	\$251	4.42%	POJOAQUE	65	\$5,531	\$5,613	\$82	1.48%
CARRIZOZO	10	\$8,073	\$8,409	\$336	4.16%	PORTALES	79	\$5,163	\$5,217	\$54	1.05%
CENRAL	69	\$5,427	\$5,471	\$44	0.81%	QUEMADO	23	\$9,394	\$7,772	(\$1,622)	-17.27%
CHAMA	15	\$7,732	\$8,252	\$520	6.73%	QUESTA	N/A	\$7,689	\$7,698	\$9	0.12%
CIMARRON	29	\$7,296	\$7,564	\$268	3.67%	Red River Valley	N/A	\$7,879	\$7,383	(\$496)	-6.30%
CLAYTON	N/A	\$7,044	\$7,087	\$43	0.61%	Roots & Wings	N/A	\$7,818	\$7,787	(\$31)	-0.40%
Amistad	N/A	\$6,704	\$7,705	\$1,001	14.93%	QUESTA W/CHARTERS	26	\$7,703	\$7,678	(\$25)	-0.32%
CLAYTON W/CHARTER	35	\$7,037	\$7,102	\$65	0.92%	RATON	66	\$5,607	\$5,610	\$3	0.05%
CLOUDCROFT	37	\$6,631	\$7,003	\$372	5.61%	RESERVE	11	\$8,185	\$8,392	\$207	2.53%
CLOVIS	83	\$4,917	\$5,007	\$90	1.83%	RIO RANCHO	86	\$4,866	\$4,980	\$114	2.34%
COBRE	45	\$6,559	\$6,645	\$86	1.31%	ROSWELL	N/A	\$5,293	\$5,365	\$72	1.36%
CORONA	4	\$9,390	\$8,971	(\$419)	-4.46%	Sidney Gutierrez	N/A	\$7,504	\$6,841	(\$663)	-8.84%
CUBA	40	\$6,621	\$6,798	\$177	2.67%	ROSWELL W/CHARTER	74	\$5,298	\$5,371	\$73	1.38%
DEMING	88	\$4,733	\$4,829	\$96	2.03%	ROY	5	\$9,256	\$8,950	(\$306)	-3.31%
DES MOINES	12	\$9,440	\$8,379	(\$1,061)	-11.24%	RUIDOSO	51	\$5,958	\$6,119	\$161	2.70%
DEXTER	58	\$5,817	\$5,725	(\$92)	-1.58%	SAN JON	16	\$9,055	\$8,111	(\$944)	-10.43%
DORA	17	\$7,598	\$8,107	\$509	6.70%	SANTA FE	N/A	\$5,078	\$5,060	(\$18)	-0.35%
DULCE	63	\$5,837	\$5,656	(\$181)	-3.10%	Academy for Tech & Classics	N/A	\$8,644	\$8,093	(\$551)	-6.37%
ELIDA	22	\$9,455	\$7,800	(\$1,655)	-17.50%	Turquoise Trail	N/A	\$4,698	\$6,895	\$2,197	46.76%
ESPAÑOLA	57	\$5,902	\$5,783	(\$119)	-2.02%	Monte Del Sol Charter	N/A	\$7,242	\$4,569	(\$2,673)	-36.91%
ESTANCIAS	49	\$6,184	\$6,327	\$143	2.31%	SANTA FE W/CHARTERS	82	\$5,138	\$5,114	(\$24)	-0.47%
EUNICE	54	\$5,753	\$5,958	\$205	3.56%	SANTA ROSA	30	\$7,479	\$7,556	\$77	1.03%
FARMINGTON	87	\$4,905	\$4,919	\$14	0.29%	SILVER CONS.	56	\$5,731	\$5,803	\$72	1.26%
FLOYD	32	\$7,590	\$7,418	(\$172)	-2.27%	SOCORRO	N/A	\$4,968	\$5,274	\$306	6.16%
FT. SUMNER	25	\$7,323	\$7,690	\$367	5.01%	Cottonwood Valley	N/A	\$5,451	\$5,435	(\$16)	-0.29%
GADSDEN	80	\$5,162	\$5,211	\$49	0.95%	SOCORRO W/CHARTERS	78	\$4,991	\$5,284	\$293	5.87%
GALLUP	84	\$4,931	\$4,997	\$66	1.34%	SPRINGER	8	\$8,229	\$8,590	\$361	4.39%
GRADY	19	\$8,382	\$8,072	(\$310)	-3.70%	TAOS	N/A	\$5,661	\$5,743	\$82	1.45%
GRANTS	68	\$5,431	\$5,531	\$100	1.84%	Anansi Charter School	N/A	\$7,291	\$7,013	(\$278)	-3.81%
HAGERMAN	43	\$6,833	\$6,675	(\$158)	-2.31%	Taos Municipal Charter	N/A	\$4,565	\$4,619	\$54	1.18%
HATCH	70	\$5,752	\$5,441	(\$311)	-5.41%	TAOS W/CHARTER	62	\$5,609	\$5,684	\$75	1.34%
HOBBS	89	\$4,638	\$4,764	\$126	2.72%	TATUM	28	\$7,635	\$7,610	(\$25)	-0.33%
HONDO	13	\$8,685	\$8,347	(\$338)	-3.89%	TEXICO	38	\$6,599	\$6,884	\$285	4.32%
HOUSE	36	\$9,069	\$7,022	(\$2,047)	-22.57%	TRUTH OR CONSEQ.	59	\$5,472	\$5,717	\$245	4.48%
JAL	44	\$6,356	\$6,668	\$312	4.91%	TUCUMCARI	53	\$5,664	\$6,011	\$347	6.13%
JEMEZ MOUNTAIN	14	\$8,054	\$8,287	\$233	2.89%	TULAROSA	50	\$6,111	\$6,309	\$198	3.24%
JEMEZ VALLEY	N/A	\$7,240	\$7,635	\$395	5.46%	VAUGHN	3	\$9,777	\$9,849	\$72	0.74%
San Diego Riverside	N/A	\$6,934	\$7,002	\$68	0.98%	WAGON MOUND	2	\$9,663	\$10,114	\$451	4.67%
JEMEZ VALLEY W/CHARTER	31	\$7,185	\$7,525	\$340	4.73%	ZUNI	39	\$6,781	\$6,806	\$25	0.37%
LAKE ARTHUR	21	\$8,078	\$7,817	(\$261)	-3.23%	STATEWIDE		\$5,439	\$5,471	\$32	0.60%

¹The average of the prior year 40th, 80th and 120th day membership was used to budget membership program units for 2002-2003, with the exception of program units for new charter schools and new full-day Kindergarten programs which are budgeted based on projected 2002-2003 40th day membership. (Laws of 1999, Chapter 275, Section 1, funding based on prior year membership).

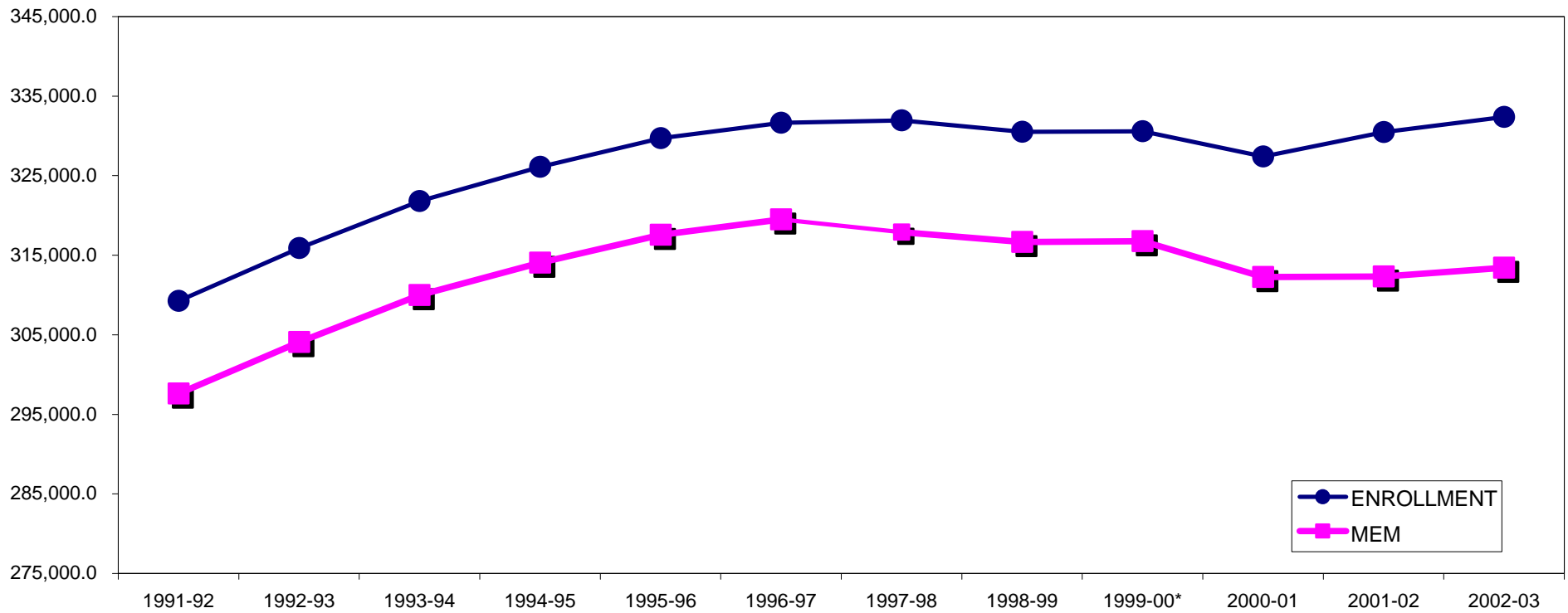
²District ranking is based on the 2002-2003 program cost per membership based on total district membership including charter schools.

RATIO OF 2002-2003 OPERATING BUDGET MEMBERSHIP TO PROGRAM UNITS

District	2002-2003 Program Units	2002-2003 Total MEM	Ratio of Units to MEM	Difference in Comparison to Statewide Avg.	District	2001-2002 Program Units	2002-2003 Total MEM	Ratio of Units to MEM	Difference in Comparison to Statewide Avg.
ALAMOGORDO	11,828.470	6,874.670	1.72	(0.17)	JEMEZ VALLEY	1,149.843	436.165	2.64	0.74
ALBUQUERQUE	153,212.218	83,224.990	1.84	(0.05)	San Diego Riverside	220.006	91.000	2.42	0.53
Amy Biehl Charter High	526.823	200.330	2.63	0.74	JEMEZ VALLEY W/CHARTER	1,369.849	527.165	2.60	0.71
Charter Vocational	715.625	500.000	1.43	(0.46)	LAKE ARTHUR	558.269	206.820	2.70	0.81
East Mountain Charter High	609.984	311.340	1.96	0.07	LAS CRUCES	40,623.794	21,759.985	1.87	(0.03)
Horizon Academy	696.515	515.000	1.35	(0.54)	LAS VEGAS CITY	4,422.476	2,311.010	1.91	0.02
Learning Com Ctr. School	364.766	146.670	2.43	0.54	Bridge Academy	122.690	40.000	3.07	1.17
Los Puentes	511.167	150.000	5.00	3.10	LAS VEGAS CITY W/CHARTER	4,545.166	2,351.010	1.93	0.04
Nuestros Valores	344.826	102.330	3.37	1.48	LAS VEGAS WEST	4,556.122	2,039.505	2.23	0.34
Pub. Acad. For Perform Arts	483.884	212.340	2.28	0.39	LOGAN	726.523	267.820	2.71	0.82
Robert F. Kennedy	452.040	177.000	2.55	0.66	LORDSBURG	1,862.471	795.660	2.34	0.45
South Valley Charter	546.430	212.660	2.57	0.68	LOS ALAMOS	6,792.705	3,451.995	4.66	2.76
SW Learning Center	538.658	224.660	2.40	0.51	LOS LUNAS	16,070.478	8,227.680	0.16	(1.74)
Twenty-first Century	330.577	184.340	1.79	(0.10)	LOVING	1,281.302	559.335	9.29	7.40
ALBUQUERQUE W/CHARTERS	159,333.513	86,161.660	1.85	(0.04)	LOVINGTON	5,198.012	2,645.335	0.39	(1.51)
ANIMAS	819.888	306.650	2.67	0.78	MAGDALENA	1,025.054	338.155	1.17	(0.72)
ARTESIA	6,434.485	3,457.165	1.86	(0.03)	MAXWELL	396.513	130.160	5.30	3.41
AZTEC	5,841.960	3,200.160	1.83	(0.07)	MELROSE	690.227	233.670	6.17	4.28
BELEN	8,848.009	4,715.015	1.88	(0.02)	MESA VISTA	1,442.271	516.025	3.10	1.21
BERNALILLO	7,691.135	3,376.505	2.28	0.39	MORA	1,600.265	683.845	11.42	9.52
BLOOMFIELD	5,445.538	3,028.005	1.80	(0.09)	MORIARTY	7,807.003	4,269.675	0.05	(1.84)
CAPITAN	1,179.038	558.350	2.11	0.22	MOSQUERO	229.938	55.835	16.60	14.70
CARLSBAD	12,472.822	6,088.840	2.05	0.16	MOUNTAINAIR	926.664	364.520	5.83	3.94
Jefferson Montessori	403.440	168.000	2.40	0.51	PECOS	2,126.177	806.650	1.93	0.04
CARLSBAD W/CHARTERS	12,876.262	6,256.840	2.06	0.17	PEÑASCO	1,560.330	626.675	5.85	3.96
CARRIZOZO	625.767	215.500	2.90	1.01	POJOAQUE	3,668.996	1,893.000	2.58	0.69
CENTRAL	13,463.519	7,126.505	1.89	(0.00)	PORTALES	4,892.858	2,716.015	0.18	(1.72)
CHAMA VALLEY	1,481.826	520.020	2.85	0.96	QUEMADO	476.845	177.680	8.17	6.27
CIMARRON	1,405.111	537.985	2.61	0.72	QUESTA	1,450.837	545.820	0.20	(1.69)
Moreno Valley	172.350	60.000	2.87	0.98	Red River Valley	109.660	43.015	2.55	0.66
CIMARRON W/CHARTERS	1,577.461	597.985	2.64	0.75	Roots & Wings	41.220	15.330	2.69	0.80
CLAYTON	1,565.785	639.830	2.45	0.55	QUESTA W/CHARTERS	1,601.717	604.165	2.65	0.76
Amistad	40.775	15.325	2.66	0.77	RATON	2,868.299	1,480.660	1.94	0.04
CLAYTON W/CHARTER	1,606.560	655.155	2.45	0.56	RESERVE	679.085	234.345	2.90	1.01
CLOUDCROFT	1,121.215	463.670	2.42	0.53	RIO RANCHO	17,533.809	10,196.155	1.72	(0.17)
CLOVIS	13,676.897	7,910.495	1.73	(0.16)	ROSWELL	17,142.030	9,253.670	1.85	(0.04)
COBRE	4,014.605	1,749.170	2.30	0.40	Sidney Gutierrez	92.121	39.000	2.36	0.47
CORONA	262.291	84.670	3.10	1.21	ROSWELL W/CHARTER	17,234.151	9,292.670	1.85	(0.04)
CUBA	1,866.700	785.495	2.38	0.48	ROY	334.764	108.325	3.09	1.20
DEMING	8,678.256	5,204.340	1.67	(0.23)	RUIDOSO	5,103.271	2,415.165	2.11	0.22
DES MOINES	399.746	138.170	2.89	1.00	SAN JON	449.044	160.335	2.80	0.91
DEXTER	2,119.955	1,072.330	1.98	0.08	SANTA FE	21,518.488	12,315.165	1.75	(0.15)
DORA	632.717	226.010	2.80	0.91	Academy for Tech & Classics	429.410	153.670	2.79	0.90
DULCE	1,386.925	710.175	1.95	0.06	Turquoise Trail	574.561	241.340	2.38	0.49
ELIDA	300.312	111.505	2.69	0.80	Monte Del Sol Charter	596.730	378.680	1.58	(0.32)
ESPAÑOLA	9,778.935	4,897.175	2.00	0.10	SANTA FE W/CHARTERS	23,119.189	13,088.855	1.77	(0.13)
ESTANCIA	1,964.027	899.015	2.18	0.29	SANTA ROSA	2,004.677	768.335	2.61	0.72
EUNICE	1,243.738	604.500	2.06	0.16	SILVER CITY	6,749.031	3,361.505	2.01	0.12
FARMINGTON	16,846.289	9,882.840	1.70	(0.19)	SOCORRO	3,525.458	1,935.835	1.82	(0.07)
FLOYD	678.425	264.845	2.56	0.67	Cottonwood Valley	236.794	126.165	1.88	(0.02)
FT. SUMNER	930.670	350.505	2.66	0.76	SOCORRO W/CHARTERS	3,762.252	2,062.000	1.82	(0.07)
GADSDEN	23,199.035	12,893.835	1.80	(0.09)	SPRINGER	749.988	252.845	2.97	1.07
GALLUP	23,574.616	13,662.500	1.73	(0.17)	TAOS	6,024.232	3,037.680	1.98	0.09
Middle College High	145.138	50.000	2.90	1.01	Anansi Charter School	96.863	40.000	2.42	0.53
GALLUP W/CHARTER	23,719.754	13,712.500	1.73	(0.16)	Taos Municipal Charter	348.237	218.330	1.60	(0.30)
GRADY	282.471	101.340	2.79	0.89	TAOS W/CHARTER	6,469.332	3,296.010	1.96	0.07
GRANTS	6,908.678	3,617.185	1.91	0.02	TATUM	836.692	315.335	2.65	0.76
HAGERMAN	1,159.666	503.167	2.30	0.41	TEXICO	1,204.760	506.840	2.38	0.48
HATCH	2,723.536	1,449.495	1.88	(0.01)	TRUTH OR CONS.	3,172.215	1,606.830	1.97	0.08
HOBBS	12,053.274	7,326.510	1.65	(0.25)	TUCUMCARI	2,540.527	1,224.010	2.08	0.18
HONDO VALLEY	363.621	126.165	2.88	0.99	TULAROSA	2,335.773	1,072.170	2.18	0.29
HOUSE	398.483	164.335	2.42	0.53	VAUGHN	298.724	87.835	3.40	1.51
JAL	936.663	406.830	2.30	0.41	WAGON MOUND	618.074	176.985	3.49	1.60
JEMEZ MOUNTAIN	1,029.133	359.500	2.86	0.97	ZUNI	4,080.324	1,736.170	2.35	0.46
					STATEWIDE	591,902.978	312,757.717	1.89	

STUDENT MEMBERSHIP & ENROLLMENT

1991-1992 ACTUAL TO 2002-2003 BUDGETED



***NOTE:** Because of the funding formula revisions, which went into effect on July 1, 1999 (Laws of 1999, Chapter 275, Section 1), membership for 1998-1999 was used to determine 1999-2000 funding and the average of the prior year's 40th, 80th, and 120th day membership was used to determine funding beginning in 2000-2001, and the average of the prior year's 40th, 80th, and 120th day membership was used to determine funding beginning 200-2001 and fiscal years thereafter.

Sources: "Public School Pupil Membership Funded Reports," 1991-1992 to 2001-2002; 2002-2003 operating budgets.

**GROWTH IN SPECIAL EDUCATION
1986-1987 ACTUAL TO 2002-2003 BUDGETED**

Year	A/B Programs	A/B Membership	Ancillary Programs	C, D, DNPTC Membership	3 & 4 Yr. Dev. Delayed	Program Dollars Generated	Percent of Program Cost
1986-87	894.82		445.73	13,546	392 ¹	\$96,750,123 ²	14.3%
1987-88	919.20		470.07	14,367	827	\$111,784,462	15.1%
1988-89	946.86		485.56	15,176	1,155	\$122,824,031	15.7%
1989-90	983.39		519.03	16,290	1,255	\$136,439,854	16.4%
1990-91	1,051.97		557.05	17,376	1,406	\$152,505,707	16.4%
1991-92	1,121.61		646.47	18,066	1,598	\$161,855,347	17.2%
1992-93	1,183.30		671.31	19,064	2,056	\$173,545,813	17.9%
1993-94	1,229.47		718.04	19,939	2,433	\$191,330,407	18.5%
1994-95	1,272.24		837.72	21,284	2,860	\$218,831,708	19.5%
1995-96 ²	1,308.83		1,043.02	22,474	3,309	\$249,487,615	21.0%
1996-97	1,330.44		1,124.06	23,610	3,488	\$267,968,658	21.9%
1997-98 ³		32,425	1,548.18	24,412	3,680	\$229,127,550	17.8%
1998-99		33,561	1,706.28	25,361	3,825	\$262,774,130	18.8%
1999-00 ⁴		33,564	1,706.38	25,362	3,825	\$275,783,958	18.8%
2000-01 ⁴		34,103	1,765.73	25,159	3,488	\$299,082,134	19.2%
2001-02 ⁴		35,054	1,780.09	25,053	3,564	\$326,390,574	19.2%
2002-2003 Operating Budgets ⁴		35,342	1,655.80	24,903	3,776	\$329,829,212	19.2%
15-Year Increase (1986-87 to 2001-02)			299.37%	84.95%	N/A	237.35%	
10-Year Increase (1991-92 to 2001-02)			175.36%	38.68%	123.05%	101.66%	
5-Year Increase (1996-97 to 2001-02)			58.36%	6.11%	2.19%	21.80%	

¹Four-year-old Developmentally Delayed children were funded by a transfer from Reserve Fund in the amount of \$2,140,920 which is not reflected here in Program Dollars Generated or Percent of Program Cost.

²Ancillary FTE includes ancillary evaluative services FTE.

³Beginning with the 1997-98 school year, funding for A- and B-level special education services will be determined on the basis of membership rather than program FTE. Prior to 1997-98, students receiving C and D level special education services were counted apart from the grade level counts. Beginning in 1997-98, all students are counted at grade level (Laws of 1997, Chapter 40).

⁴Because of the funding formula revisions, which went into effect on July 1, 1999 (Laws of 1999, Chapter 275, Section 1), membership for 1998-1999 was used to determine the funding for 1999-2000 and the average of the prior year's 40th, 80th and 120th day membership was used to determine funding beginning in 2000-2001, and the average of the prior year's 40th, 80th, and 120th day membership was used to determine funding beginning 2000-2001 and fiscal years thereafter.